

## Advanced Printer Driver Ver.4

# Install Manual

---

### Overview

An overview of the APD and the description of operating environment.

### Installation and Setup

Descriptions from installation of the APD to making prints with the TM printer.

### Silent Installation

Descriptions of the silent install.



---

## Cautions

- No part of this document may be reproduced, stored in a retrieval system, or transmitted in any form or by any means, electronic, mechanical, photocopying, recording, or otherwise, without the prior written permission of Seiko Epson Corporation.
- The contents of this document are subject to change without notice. Please contact us for the latest information.
- While every precaution has taken in the preparation of this document, Seiko Epson Corporation assumes no responsibility for errors or omissions.
- Neither is any liability assumed for damages resulting from the use of the information contained herein.
- Neither Seiko Epson Corporation nor its affiliates shall be liable to the purchaser of this product or third parties for damages, losses, costs, or expenses incurred by the purchaser or third parties as a result of: accident, misuse, or abuse of this product or unauthorized modifications, repairs, or alterations to this product, or (excluding the U.S.) failure to strictly comply with Seiko Epson Corporation's operating and maintenance instructions.
- Seiko Epson Corporation shall not be liable against any damages or problems arising from the use of any options or any consumable products other than those designated as Original EPSON Products or EPSON Approved Products by Seiko Epson Corporation.

## Trademarks

EPSON® and ESC/POS® are registered trademarks of Seiko Epson Corporation in the U.S. and other countries.

MS-DOS®, Microsoft®, Win32®, Windows®, Windows Vista®, Windows Server®, Visual Studio®, Visual Basic®, Visual C++®, and Visual C#® are either registered trademarks or trademarks of Microsoft Corporation in the United States and other countries.

## ESC/POS® Command System

EPSON has been taking industry's initiatives with its own POS printer command system (ESC/POS). ESC/POS has a large number of commands including patented ones. Its high scalability enables users to build versatile POS systems. The system is compatible with all types of EPSON POS printers (excluding the TM-C100) and displays. Moreover, its flexibility makes it easy to upgrade the future. The functionality and the user-friendliness is valued around the world.

Copyright © 2008-2012 Seiko Epson Corporation. All rights reserved.

## For Safety

### Key to Symbols

The symbols in this manual are identified by their level of importance, as defined below. Read the following carefully before handling the product.

**CAUTION**

Provides information that must be observed to avoid damage to your equipment or a malfunction.

**NOTE**

Provides important information and useful tips.

## Restriction of Use

When this product is used for applications requiring high reliability/safety such as transportation devices related to aviation, rail, marine, automotive etc.; disaster prevention devices; various safety devices etc; or functional/precision devices etc, you should use this product only after giving consideration to including fail-safes and redundancies into your design to maintain safety and total system reliability. Because this product was not intended for use in applications requiring extremely high reliability/safety such as aerospace equipment, main communication equipment, nuclear power control equipment, or medical equipment related to direct medical care etc, please make your own judgment on this product's suitability after a full evaluation.

---

## *About this Manual*

### Aim of the Manual

This manual is aimed to provide the necessary information to install the EPSON™ printer driver (Advanced Printer Driver).

### Manual Content

The manual is made up of the following sections:

Chapter 1	<a href="#">Overview</a>
Chapter 2	<a href="#">Installation and Setup</a>
Chapter 3	<a href="#">Silent Installation</a>

# Contents

■ <b>For Safety</b> .....	<b>3</b>
Key to Symbols .....	3
■ <b>Restriction of Use</b> .....	<b>3</b>
■ <b>About this Manual</b> .....	<b>4</b>
Aim of the Manual.....	4
Manual Content .....	4
■ <b>Contents</b> .....	<b>5</b>

---

## Overview ..... 7

■ <b>Introduction</b> .....	<b>7</b>
Package organization.....	7
Manual organization .....	8
■ <b>Operating Environment</b> .....	<b>9</b>
Computer .....	9
OS .....	9
.NET Framework Version .....	10
Interface .....	11
Application.....	11
■ <b>Supported Models</b> .....	<b>11</b>
■ <b>Connection Pattern</b> .....	<b>12</b>
Connecting cable.....	12
■ <b>Differences Depending on the OS</b> .....	<b>13</b>
■ <b>Restrictions</b> .....	<b>15</b>
■ <b>Manuals/Sample Programs</b> .....	<b>16</b>
Installation.....	16
Uninstallation .....	17

---

## Installation and Setup..... 19

Notes on upgrading from APD 2.xx, 3.xx.....	19
Compatibility between APD 4.5xx or later and other driver/utility .....	19
■ <b>Installation methods</b> .....	<b>20</b>
■ <b>Minimum Install</b> .....	<b>21</b>
Installation Flow .....	21
Installation.....	21
Connecting the TM Printer.....	27
Print Test Page .....	29

■ <b>Standard Install</b> .....	<b>30</b>
Installation Flow .....	30
Installation .....	30
■ <b>Uninstallation</b> .....	<b>37</b>
■ <b>Custom Install</b> .....	<b>39</b>
Installation Flow .....	39
Installation .....	39
■ <b>Plug and Play</b> .....	<b>44</b>
Installation Flow .....	44
Connecting the TM Printer .....	45
Installing the printer driver .....	45
■ <b>Shared Printer</b> .....	<b>46</b>
Installation .....	46
Uninstallation.....	49
■ <b>Maintenance after Installing the APD</b> .....	<b>52</b>
Adding the printer driver .....	52
Uninstalling the printer driver.....	56
Replacing a printer .....	57
Configuring an IP address for the TM printer.....	58
Changing the port settings of the printer driver.....	61
Upgrade Install of the APD.....	64

---

## **Silent Installation ..... 67**

■ <b>What Is a Silent Installation?</b> .....	<b>67</b>
Flow of the Silent Installation .....	68
■ <b>Setting the APD Environment To Be Copied</b> .....	<b>69</b>
APD Setting .....	69
■ <b>Creating a Package or Script file</b> .....	<b>70</b>
■ <b>Executing the Silent Installation</b> .....	<b>73</b>
How to execute the Silent Installation.....	73
Checking the Installation Result .....	74
Command Options .....	74

# Overview

## Introduction

Advanced Printer Driver (hereafter called APD) is a Windows printer driver for EPSON TM printers.

APD can monitor the status of the TM printer with Status API for use of POS embedded.

The APD environment that is already set up can be restored (silent install) on another computer.

The printers locally connected to the computers can be used as shared printers (Point & Print), by using network function of the OS.

### Package organization

The APD consists of the following packages.

---

#### APD installer (APD\_4xxTC.exe)

A package to install the APD.

---

#### Manual/Sample installer (APDMANTC\_x.exe)

A package to install APD manuals (PDF) and sample programs using the APD.

## Manual organization

---

### Install Manual

This manual. Descriptions of the procedures from installing the APD to performing test print, adding printer drivers, and the silent install which is an automated APD installation.

---

### TM Printer Manual

Descriptions of how to use the APD and its functions.

---

### Printer Specification

Descriptions of the specifications of each printer driver.

---

### Status API Manual

Descriptions of how to get the status of the TM printer from the user application by using the Status API.

---

### Devmode API / PRINTERINFO Manual

Descriptions of how to configure some printer functions on your application using the Devmode API. Descriptions of the PRINTERINFO Function of Windows.



# Operating Environment

## Computer

Any PC/AT compatible machine running any of the following Windows systems.

## OS

- Microsoft Windows 8 (32bit/64bit)
- Microsoft Windows 7 SP1 (32bit/64bit)
- Microsoft Windows Vista SP2 (32bit/64bit)
- Microsoft Windows XP Professional SP3 (32bit)
- Microsoft Windows Server 2012 (64bit)
- Microsoft Windows Server 2008 R2
- Microsoft Windows Server 2008 SP2 (32bit/64bit)
- Microsoft Windows Server 2003 R2 SP2 (32bit/64bit)

The following service/software is supported in Windows Server 2003/2008 environment.

Terminal Service

Citrix XenApp5.0

- Microsoft Windows Embedded 7 (32bit/64bit)
- Microsoft Windows Embedded POSReady 7
- Microsoft Windows Embedded POSReady 2009
- Microsoft Windows Embedded for Point of Service 1.1 (32bit)

- Microsoft Windows Embedded Standard (32bit)

The following components are required.

Volume Shadow Copy Service

System Restore Core

OLE Dialog Interfaces

Local Printing Support

Task Scheduler (Required for USB driver installation)

Primitive: DbgHelp (Required for USB driver installation)

Communications Port (If the Computer has no serial or parallel port, one of them must be installed manually.)

Primitive: Winhlp32 Required for help file browsing)

After installing the components listed above, perform a dependency check for the components using the utility of the Windows XP Embedded (Target Designer). For more details, ask your OS distributors.

**NOTE**

OSs other than those listed above are not supported.

## .NET Framework Version

For .NET environment, use in the following environment.

- .NET Framework 2.0 or later.
- For Windows Vista, .NET Framework 3.0 or later is installed.

## Interface

The following interfaces are supported with the APD.

Interface	Descriptions
Parallel	-
Serial	-
USB	USB 2.0 compliant (Full-Speed 12 Mbps operation. High-Speed operation is not possible.)
Ethernet	10/100 Base-T

Interfaces only for the Customer Display or Drawer can be mounted on some TM printer models.

For information on the interfaces available on your TM printers, ask your sales representative.

## Application

The APD supports direct printing from the Windows applications. No programming is required for printing directly from commercial applications, such as word processing or spread sheet.

When you want to receive TM printer statuses such as paper out errors at your application, use the Status API. In this case, you need to develop the applications to incorporate the monitoring function.

## Supported Models

APD 4.xx supports the following models.

BA-T500II	RP-U420	TM-H6000II	TM-H6000III	TM-H6000IV
TM-L90	TM-T58	TM-T70	TM-T88IV	TM-T88V
TM-U220	TM-U230			

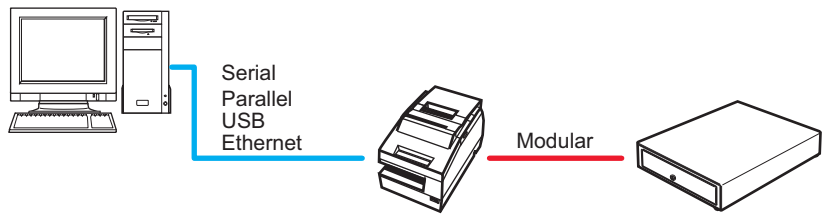
# Connection Pattern

When connecting the Cash Drawers to the TM printers.

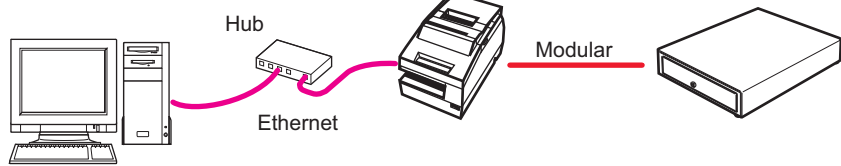
The connection patterns shown below are available depending on the TM printer interface.

If you want to use a Customer Display, install the APD Ver.4 (English).

Stand-alone connection



Ethernet connection



**CAUTION** If you use a connection with interface conversion connector or interface expanded board, the operation is not guaranteed.

**NOTE**

- Select the appropriate connection patterns for each TM printer model (interface specification) and configure the communication settings of each interface.
- Use DIP switch to configure communication settings of the TM printer  
For more details, see the manuals bundled with the products.

## Connecting cable

For the Serial connection, use a cable configured as follows.

D-Sub 25P(TM)			D-Sub 9P(PC)	
Pin	Signal		Signal	Pin
1	FG		DCD	1
2	TXD		TXD	3
3	RXD		RXD	2
20	DTR		DTR	4
6	DSR		DSR	6
4	RTS		RTS	7
5	CTS		CTS	8
7	GD		GD	5
25	RESET		RI/RESET	9

## Differences Depending on the OS

The content of the descriptions of some operations in this book may be different depending on the OS. See the following.

Item	Description
Screens shown	Screens in Windows Vista are used for the descriptions in this manual.
Confirmation and setting of the printer driver	<p>Windows 8            ( 桌面 ) - ( 側邊欄 ( 設定 ) ) - ( 控制台 ) - ( 硬體和音效 ) - ( 印表機 )            Right click the printer driver, and select the ( 印表機內容 ).</p> <p>Windows 7            ( 開始 ) - ( 控制台 ) - ( 硬體和音效 ) - ( 裝置和印表機 )            Right click the printer driver, and select the ( 印表機內容 ).</p> <p>Windows Vista            ( 開始 ) - ( 控制台 ) - ( 硬體和音效 ) - ( 印表機 )            Right click the printer driver, and select the ( 內容 ).</p> <p>Windows XP            (Start) - (Control Panel) - (Printers and Faxes)            Right click the printer driver, and select the (Properties).</p>
Delete a shared printer	<p>Windows 8            ( 桌面 ) - ( 側邊欄 ( 設定 ) ) - ( 控制台 ) - ( 硬體和音效 ) - ( 裝置和印表機 )</p> <p>Windows 7            ( 開始 ) - ( 控制台 ) - ( 硬體和音效 ) - ( 裝置和印表機 )</p> <p>Windows Vista            ( 開始 ) - ( 控制台 ) - ( 硬體和音效 ) - ( 印表機 )</p> <p>Windows XP            (Start) - (Control Panel) - (Printers and Faxes)</p>
Add a shared printer	<p>Windows 8            ( 桌面 ) - ( 側邊欄 ( 設定 ) ) - ( 控制台 ) - ( 硬體和音效 ) - ( 新增裝置 )</p> <p>Windows 7            ( 開始 ) - ( 控制台 ) - ( 硬體和音效 ) - ( 新增印表機 )</p> <p>Windows Vista            ( 開始 ) - ( 控制台 ) - ( 硬體和音效 ) - ( 新增印表機 )</p> <p>Windows XP            (Start) - (Control Pane) - (Add a printer)</p>
Server Properties	<p>Windows 8            When selecting a printer in the ( 裝置和印表機 ) screen, the ( 打印服务器属性 ) message appears on the tool bar.</p> <p>Windows 7            When selecting a printer in the ( 裝置和印表機 ) screen, the ( 打印服务器属性 ) message appears on the tool bar.</p> <p>Windows Vista            ( 印表機 ) - ( 福案 ) - ( 以系統管理員身分執行 ) - ( 伺服器內容 )</p> <p>Windows XP            (Printers and Faxes) - (File) - (Server Properties)</p>

Item	Description
Uninstall a program	Windows 8 ( 桌面 ) - 側邊欄 ( 設定 ) - ( 控制台 ) - ( 移除安裝程式 ) Windows 7 ( 開始 ) - ( 控制台 ) - ( 移除安裝程式 ) Windows Vista ( 開始 ) - ( 控制台 ) - ( 移除安裝程式 ) Windows XP (Start) - (Control Panel) - (Add or Remove Programs)
Windows 8 How to start the application	Click ( 開始 ), then ( 所有應用程式 ), and select the application you want to use from the list.

## Restrictions

- When using the printer driver for EPSON Terminal Printers (laser printer, ink-jet printer and others) or EPSON printer window together with the APD, installation and uninstallation must be performed in the following order:

[Installation]

1. EPSON Terminal Printer driver
2. APD

[Uninstallation]

1. APD
2. EPSON Terminal Printer driver

If you want to overwrite the EPSON Terminal Printer driver after the APD is installed, uninstall the APD first and then overwrite the EPSON Terminal Printer driver.

- For a USB connection, the printer driver can be installed by Plug and Play after installing the APD; however, the printer driver cannot be added when the TM printer is offline (cover open, paper out, and so on.) When the printer recovers from the offline status, it will be added.
- The maximum number of printers that can be connected simultaneously through a USB connection is 8.
- When a Parallel interface TM printer is connected to Windows XP, a Plug and Play request window pops up and "EPSON TM-P2.01" is added in Other devices of the Device manager. Do not perform [Uninstall] or [Update Driver Software] for this device. When a Parallel interface TM printer is connected to the computer prior to the driver installation, the computer detects "EPSON TM-P2.01", but you should not uninstall or update, just click [Cancel]. (It is added to Other device in the Device manager, and deleted when the driver is installed.)  
When you connect a TM printer with parallel interface before installing the driver, "EPSON-P2.01" is detected. In such case, just click "Cancel" and not select "Uninstall" or "Update Driver Software". (It is added to "Other device" in the Device manager, however, automatically deleted after the driver is installed.)

## Manuals/Sample Programs


Manuals and sample programs are provided in a package separate from the APD.

### Installation

Follow the procedures below to install the manuals and sample programs.

#### CAUTION

Install manuals/sample programs after installing the APD.

- 1** Double click the (Manual/Sample Installer) icon to start the installation. 
- 2** The Install Shield Wizard screen appears. Click the (Next) button.
- 3** The "License Agreement" screen appears. Read the content and select "I accept the terms of the license agreement." Then click the (Next) button.
- 4** The "Select Features" screen appears. Select "Manual" or "Sample"; then click the (Next) button."
- 5** The "Ready to install the Program" screen appears. Click the (Install) button. The installation of manuals or sample programs starts.
- 6** The "Install Shield Wizard Complete" screen appears. Click the (Finish) button. Installation ends.
- 7** Select from (開始)-(所有程式)-(EPSON)-(EPSON Advanced Printer Driver 4) and open (Manual(TC))/(Sample Program(TC)). The screen to select manuals and sample programs appears.



## Uninstallation

Follow the procedures below to uninstall manuals and sample programs.

**CAUTION**

Uninstall manuals/sample programs before uninstalling the APD.

- 1** Select from (開始)-(控制台) and open (移除安裝程式). ([Reference page of other OS.](#))
- 2** The “解除安裝或變更程式” screen appears. Click the (EPSON APD4 Sample&Manual) button.
- 3** The uninstallation confirmation screen appears. Click the (是) button. Manuals and sample programs are uninstalled.
- 4** Click the (Finish) button. Installation ends.



# Installation and Setup

This chapter describes the procedures from the installation to execution of test print. The uninstallation procedure (page 37) and various maintenance procedures after installation (page 52) are also provided.

## NOTE

The APD of version 4.07 or later supports 32 bit and 64 bit version OS.

## CAUTION

- Install with Administrator privileges.
- Do not connect the TM printer, until installation of the APD completes.
- Close all running applications before the installation.

## Notes on upgrading from APD 2.xx, 3.xx

APD 2.xx or 3.xx needs to be uninstalled in order to install APD 4.xx. Keep in mind the following points.

- When you install APD 4.xx to a computer on which APD 2.xx or 3.xx has been installed, the previous version is automatically uninstalled before the installation of APD 4.xx.
- Some printers do not support APD 4.xx. Make sure that your printer supports APD 4.xx. If you are using such printer and install APD 4.xx, the printer becomes unusable on your system.

## Compatibility between APD 4.5xx or later and other driver/utility

When you install APD 4.5xx or later, the driver/utility of versions earlier than those shown below become disabled. The shared printer also becomes disabled after accessed from a client computer. Compatible driver/utility must be separately prepared and upgraded by the user. For the upgrading procedure, refer to the manual for each driver/utility.

Other driver/utility	Compatible version
EPSON OPOS ADK	Ver2.68J or later
EPSON OPOS ADK for .NET	Ver1.11.20 or later
EPSON JavaPOS ADK	Ver1.11.20 or later
EpsonNet Simple Viewer	Ver2.30 or later
TM Virtual Port Driver	Ver7.10 or later

If coexistent other driver/utility cannot be upgraded, re-install and use APD 4.15 or earlier.

## Installation methods

The following methods are available to install the APD.

- **Minimum Installation** [page 21](#)  
This recommended installation option installs minimum features required for using the printer. This method reduces the number of files to be installed and the time for installation.
- **Standard Installation** [page 30](#)  
This installation option installs all features APD supports. Additionally, printer drivers for all models can be installed through Plug and Play feature. For the APD of version 4.07 or later, the printer drivers for both 32 bit and 64 bit version OS are installed.
- **Custom installation** [page 39](#)  
This installation option allows you to select and install only certain feature(s). For the APD of version 4.07 or later, you can select the 32 bit printer driver or 64 bit printer driver according to your OS environment.

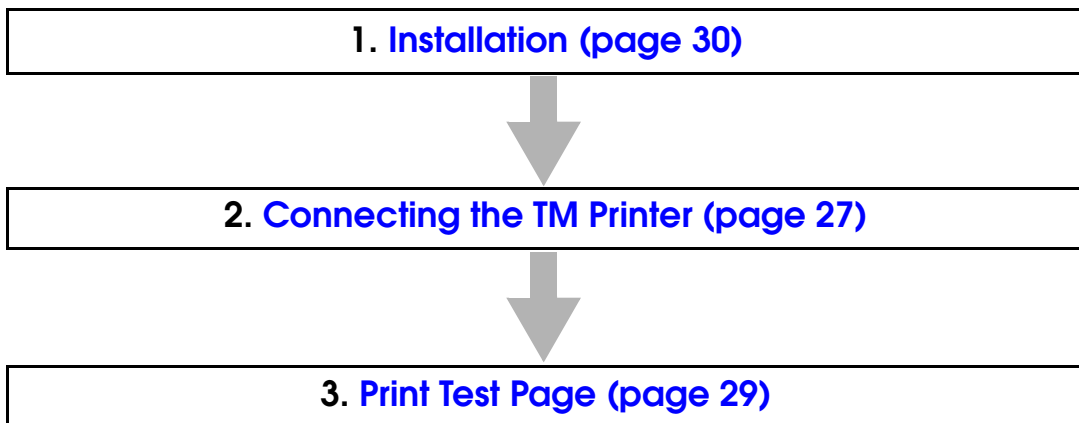
This document also describes following topics which can be performed after installation.

- **Plug and Play** [page 44](#)  
TM printer with USB interface can be added as a printer device on a computer on which the APD is already installed (standard or custom install).
- **Installation for sharing the printer** [page 46](#)  
This method installs a printer to be shared (Point & Print).
- **Upgrade installation of the APD** [page 64](#)  
This allows you to perform upgrade installation of the APD of new version.
- **Silent installation** [page 67](#)  
This allows you to copy the APD environment to other computers.

## Minimum Install

This recommended installation option installs minimum features required for using the printer. This method reduces the number of files to be installed and the time for installation.

### Installation Flow



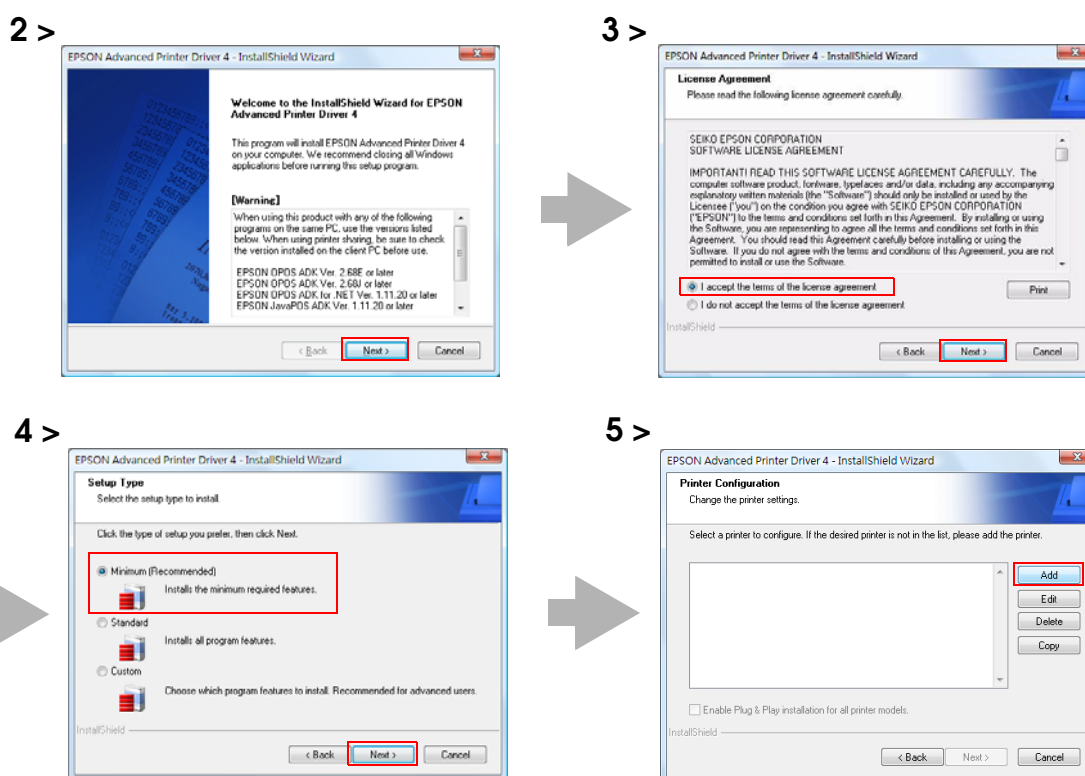
### Installation

Follow the procedure below.

- 1 Double click the (APD) icon of installer and start the installation.



- 2 The "InstallShield Wizard" screen appears. Check (Warning) for the environment of the computer. To continue installation, click the (Next) button. (See "Compatibility between APD 4.5xx or later and other driver/utility" on page 19.)
- 3 The "License Agreement" screen appears. Read the content and select "I accept the terms of the license agreement". Then click the (Next) button.
- 4 The "Setup Type" screen appears. Select "Minimum (Recommended)", then click the (Next) button.
- 5 The "Printer Configuration" screen appears. Click the (Add) button to select a model for which the driver is installed.

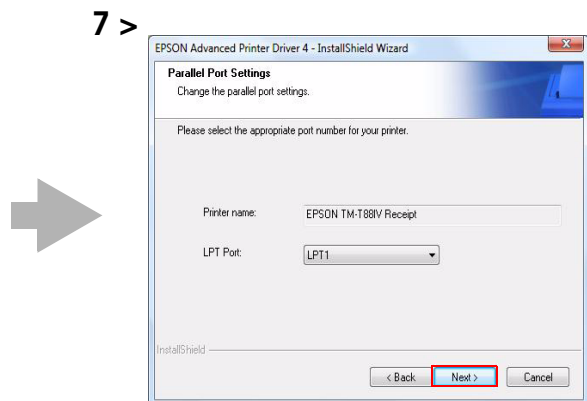
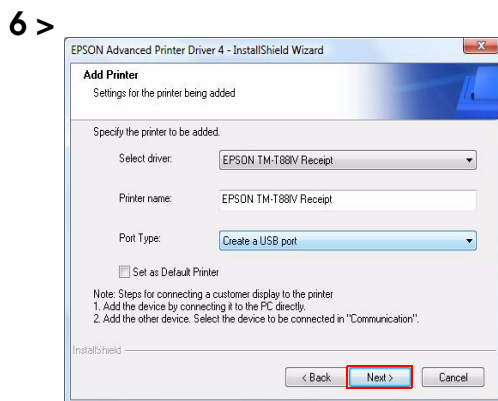


- 6** The “Add Printer” screen appears. Configure the printer driver and port to use, and click the (Next) button.

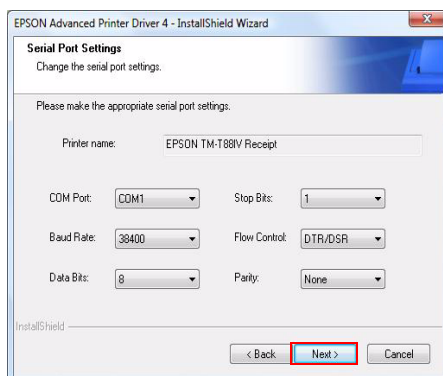
Setting	Description
Select driver	Select the printer driver to be installed.
Printer name	The printer driver name. This is changeable. Do not use Unicode/2-byte characters for the name.
Port Type	Select the type of interface to connect the computer and printer. Create a Parallel port: Proceed to Step 7. Create a Serial port: Proceed to Step 8. Create an Ethernet port: Proceed to Step 9. Create a USB port: Proceed to Step 10.
Set as Default Printer	Check when configuring the printer as that normally used from the Windows applications.

- 7** The “Parallel Port Settings” screen appears. Configure the settings of the Parallel port and click the (Next) button. Proceed to Step 10.

Setting	Description
Printer name	The printer name you entered at Step 6 is displayed. This cannot be changed.
LPT Port	Specify the number of parallel port used for connecting the printer. Usually, the port number is automatically displayed and no setting is required.

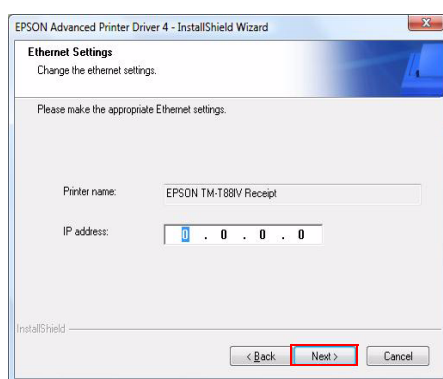


- 8 The “Serial Port Settings” screen appears. Configure the settings of the Serial port and click the (Next) button. Proceed to Step 10.



Setting	Description
Printer name	The printer name you entered at Step 6 is displayed. This cannot be changed.
COM Port	Specify the number of serial port used for connecting the printer.
Baud Rate	Specify the baud rate.
Data Bits	Specify the data bits.
Stop Bits	Specify the stop bits.
Flow Control	Specify the method of data flow between the computer and the printer.
Parity	Specify the parity.

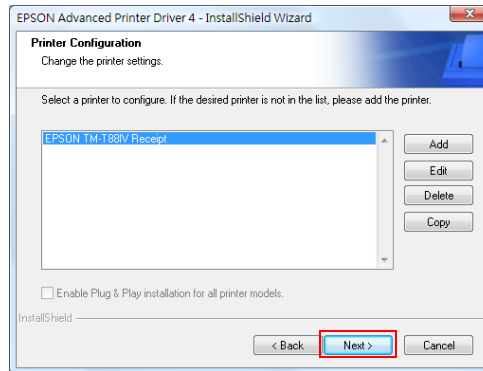
- 9 The “Ethernet Settings” screen appears. Configure the IP Address of the TM printer and click the (Next) button. Proceed to Step 10.



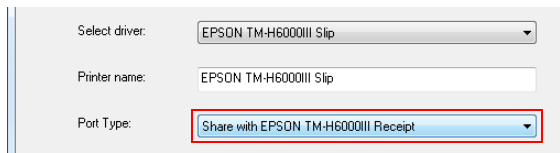
Setting	Description
Printer name	The printer name you entered at Step 6 is displayed. This cannot be changed.
IP address	Enter the printer IP address. For the procedure to configure an IP address for the TM printer, see <a href="#">"Configuring an IP address for the TM printer" on page 58</a>



- 10** The display returns to the “Printer Configuration” screen. All the printer drivers, configured between Step 6 to Step 9, appear in the list. To install another printer driver, select one method from the followings. Click the (Next) button after the configuration.



- Install Multiple Printer Drivers :  
Click the [Add] button. Repeat the Steps from 6 to 9.
- Install and Replicate a Driver :  
Click the [Copy] button. Repeat the Steps from 6 to 9.  
(You can connect up to 8 printers concurrently and copy up to 100 copies of a driver.)
- Install Different Drivers for a Certain Model :  
Click the [Add] button. Select another driver for the same model in the Step 6. Make sure that the “Port Type” is configured to share the driver with the one for the primary printer (example: Share with EPSON TM-H6000III Receipt).

**NOTE**

Combinations below are the examples of the installation of different drivers for one printer model.

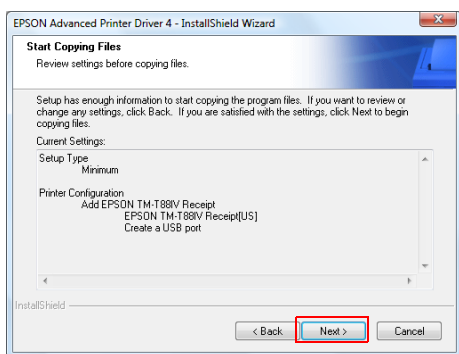
- Using both the Receipt driver and Slip driver for a hybrid printer
- Using peeler paper on one label printer and using full-label paper on another label printer
- Making multiple different print settings on multiple printer drivers  
(Example: using two drivers, specify portrait receipt printing on one driver and specify landscape receipt printing on another driver)

**11** The “Start Copying Files” screen appears. See “Current Settings” to confirm the installation settings and then click the (Next) button.

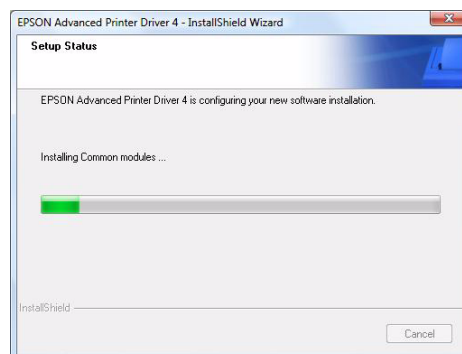
**12** The APD is installed.

**13** The “InstallShield Wizard Complete” screen appears. Click the (Finish) button to finish installation.

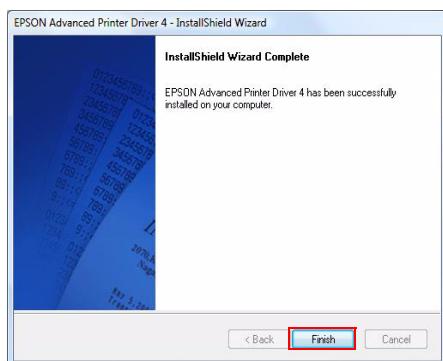
11 >



12 >



13 >



**14** In (硬體和音效) - (印表機) from (開始) - (控制台), check that the specified printer driver is correctly installed. ([Reference page of other OS.](#))



## Connecting the TM Printer

Before connecting the TM printer, set the Handshaking setting of the printer to "Receive buffer full".

Connect the TM printer. For information on how to connect the TM printer and configure the DIPSW, see the User's Manual supplied with the TM printer or the Technical Reference Guide.

### CAUTION

- The maximum number of printers that can be simultaneously connected to multiple computers is 8.
- Turn off the power of the TM printer and wait for more than 5 seconds before turning on the power.

### Parallel (LPT) connection

When the printer is connected, the "New Hardware Detected. EPSON TM-P2.01" screen appears then the "Found New Hardware Wizard" screen. In this case, perform the following steps.

- 1 Click the (Next) button to search for the driver.
- 2 The driver is found and installed.

### Serial (COM) connection

When using the serial connection, make sure the printer settings match the printer driver port settings (BaudRate/DataBits/Parity/StopBits/FlowControl).

Set the Handshaking operation (BUSY condition) for the TM printer to [Receive buffer full only]. Setting methods and applicable models are shown below.

Setting method	Applicable models
Set by user via TM printer DIP switches	Models other than the following
User setting is not required. The printer driver sets memory switches automatically.	TM-L90, BA-T500II

### Ethernet (10/100 Base-T) connection

When using Ethernet connection, check the IP address setting.

For the procedure to configure an IP address for the TM printer, see ["Configuring an IP address for the TM printer" on page 58](#).

---

## USB connection

Do not connect the TM printer to the computer before installing the APD. In case you connect the TM printer first, delete the port drivers and reinstall the printer drivers without connecting the TM printer.

**CAUTION****USB device requirements**

- Maximum USB cable length is 5m, and 5 cascaded hubs maximum.
- Use the USB cable and the USB hubs compliant with USB2.0 specification (12Mbps).

**NOTE**

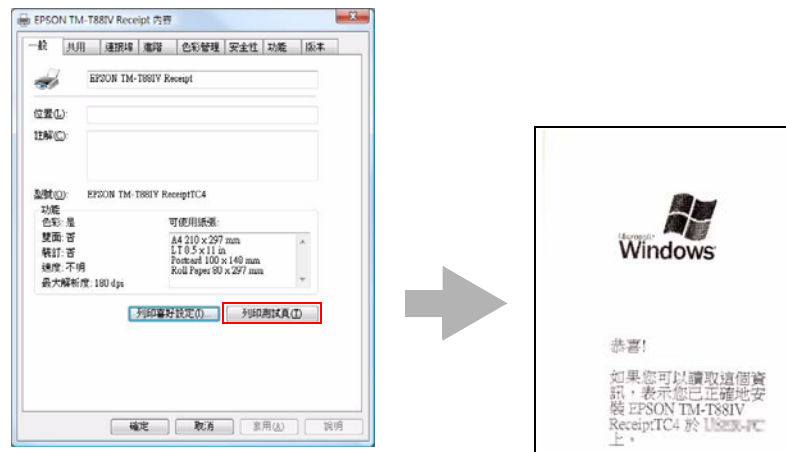
For USB power saving, see the C:\Program Files\EPSON\EPSON Advanced Printer Driver 4\TMUSB\readme\_e.txt generated after the APD installation.

## Print Test Page

After installing the APD, execute test print to check if the APD is properly installed and work normally.

Perform Print Test Page in the following procedures.

- 1 Open the Printers screen from (開始) - (控制台). Right click the printer driver you have installed and select (內容) ([Reference page of other OS.](#)).
- 2 The 內容 screen of the printer appears. Click the (列印測試頁) button to start test printing.



### NOTE

- Print Test Page of the APD does not print all the data, unlike normal Print Test Page does.
- The Print Test Page prints characters and images as an image. The data volume is large for serial connection and may take longer to print compared with other interfaces.

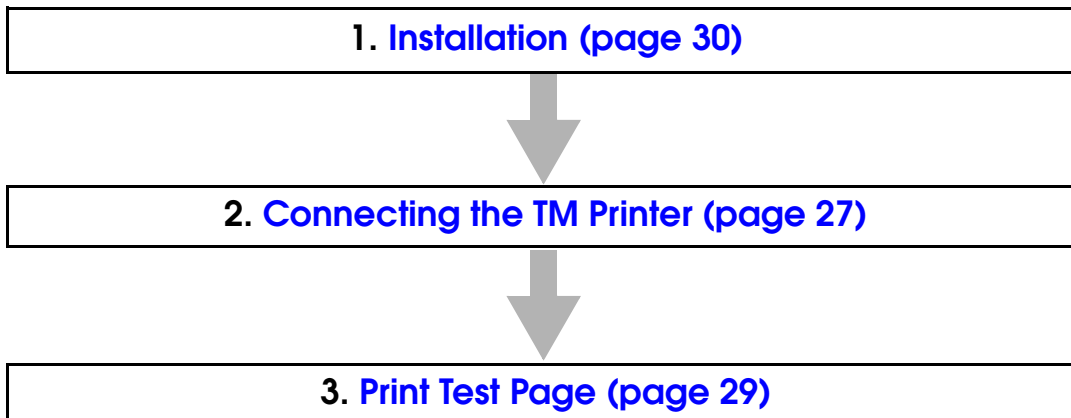
- 3 The following screen appears. If the test print was output correctly, click the (關閉) button. If the test print was not output correctly, click the (印表機問題疑難排解) button and perform troubleshooting in accordance with the Windows message.



# Standard Install

This installation option installs all features APD supports. Additionally, printer drivers for all models can be installed through Plug and Play feature. For the APD of version 4.07 or later, the printer drivers for both 32 bit and 64 bit version OS are installed.

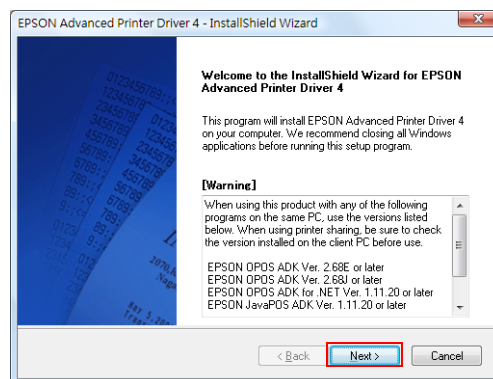
## Installation Flow



## Installation

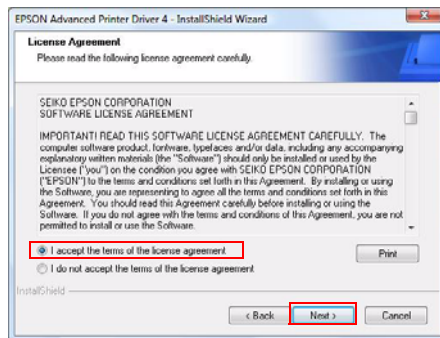
Follow the procedure below.

- 1 Double click the (APD) icon of installer and start the installation.
- 2 The "InstallShield Wizard" screen appears. Check (Warning) for the environment of the computer. To continue installation, click the (Next) button. (See ["Compatibility between APD 4.5xx or later and other driver/utility" on page 19.](#))

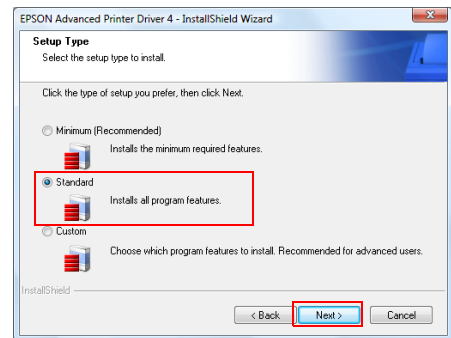


- 3 The "License Agreement" screen appears. Read the content and select "I accept the terms of the license agreement". Then click the (Next) button.
- 4 The "Setup Type" screen appears. Select "Standard", then click the (Next) button.
- 5 The "Printer Configuration" screen appears. When installing the printer driver as well as the APD, click the (Add) button.  
To install driver(s) through Plug and Play feature after installing the APD, click the (Next) button to go to Step 11.

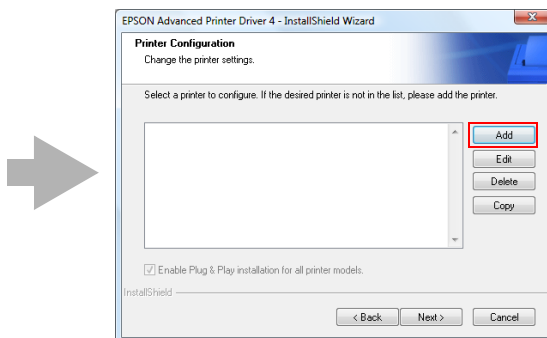
3 &gt;



4 &gt;



5 &gt;

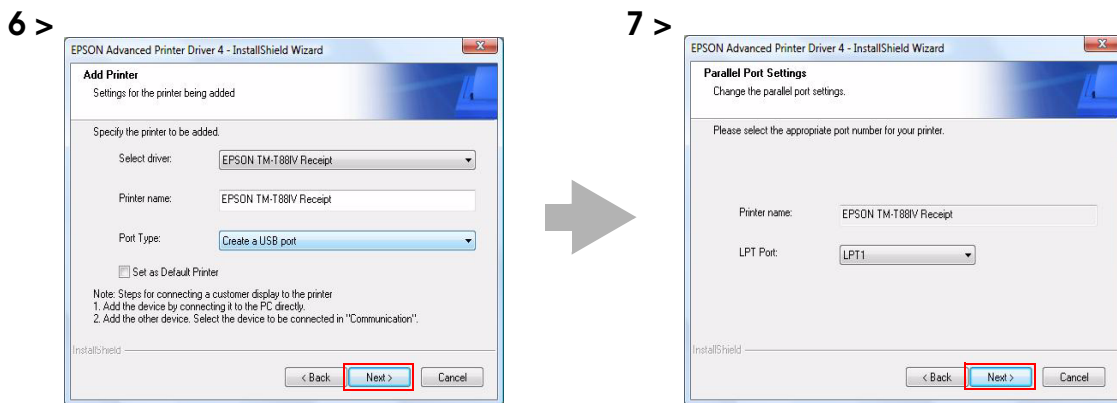


- 6** The “Add Printer” screen appears. Configure the printer driver and port to use, and click the (Next) button.

Setting	Description
Select driver	Select the printer driver to be installed.
Printer name	The printer driver name. This is changeable. Do not use Unicode/2-byte characters for the name.
Port Type	Select the type of interface to connect the computer and printer. Create a Parallel port: Proceed to Step 7. Create a Serial port: Proceed to Step 8. Create an Ethernet port: Proceed to Step 9. Create a USB port: Proceed to Step 10.
Set as Default Printer	Check when configuring the printer as that normally used from the Windows applications.

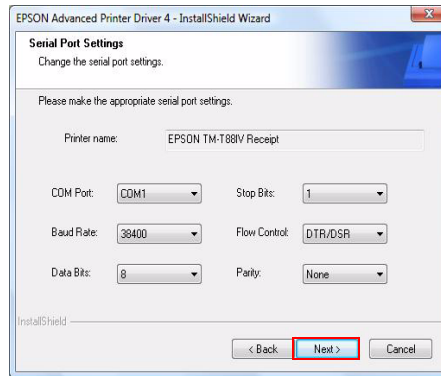
- 7** The “Parallel Port Settings” screen appears. Configure the settings of the Parallel port and click the (Next) button. Proceed to Step 10.

Setting	Description
Printer name	The printer name you entered at Step 6 is displayed. This cannot be changed.
LPT Port	Specify the number of parallel port used for connecting the printer. Usually, the port number is automatically displayed and no setting is required.



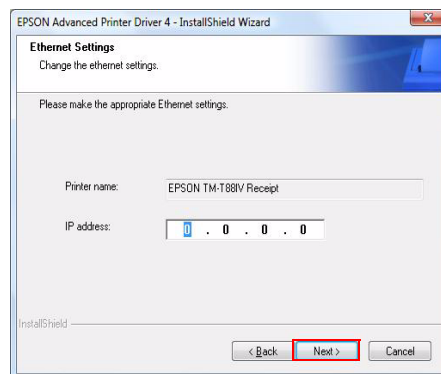


- 8 The “Serial Port Settings” screen appears. Configure the settings of the Serial port and click the (Next) button. Proceed to Step 10.



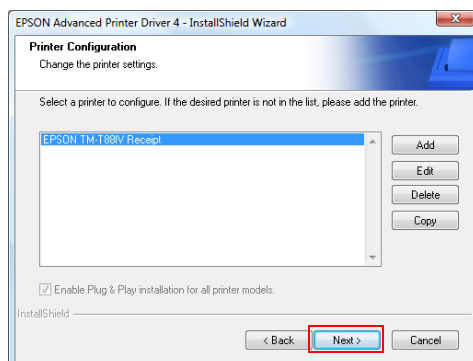
Setting	Description
Printer name	The printer name you entered at Step 6 is displayed. This cannot be changed.
COM Port	Specify the number of serial port used for connecting the printer.
Baud Rate	Specify the baud rate.
Data Bits	Specify the data bits.
Stop Bits	Specify the stop bits.
Flow Control	Specify the method of data flow between the computer and the printer.
Parity	Specify the parity.

- 9 The “Ethernet Settings” screen appears. Configure the IP Address of the TM printer and click the (Next) button. Proceed to Step 10.

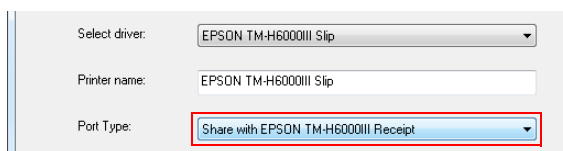


Setting	Description
Printer name	The printer name you entered at Step 6 is displayed. This cannot be changed.
IP address	Enter the printer IP address. For the procedure to configure an IP address for the TM printer, see <a href="#">"Configuring an IP address for the TM printer" on page 58.</a>

- 10** The display returns to the “Printer Configuration” screen. All the printer drivers, configured between Step 6 to Step 9, appear in the list. To install another printer driver, select one method from the followings. Click the (Next) button after the configuration.



- Install Multiple Printer Drivers :  
Click the [Add] button. Repeat the Steps from 6 to 9.
- Install and Replicate a Driver :  
Click the [Copy] button. Repeat the Steps from 6 to 9.  
(You can connect up to 8 printers concurrently and copy up to 100 copies of a driver.)
- Install Different Drivers for a Certain Model :  
Click the [Add] button. Select another driver for the same model in the Step 6. Make sure that the “Port Type” is configured to share the driver with the one for the primary printer (example: Share with EPSON TM-H6000III Receipt).



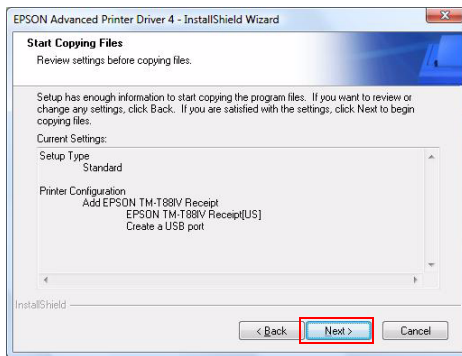
**NOTE**

Combinations below are the examples of the installation of different drivers for one printer model.

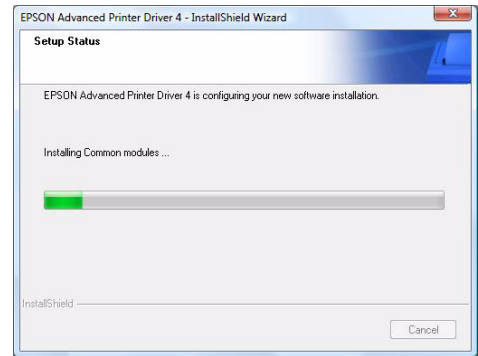
- Using both the Receipt driver and Slip driver for a hybrid printer
- Using peeler paper on one label printer and using full-label paper on another label printer
- Making multiple different print settings on multiple printer drivers  
(Example: using two drivers, specify portrait receipt printing on one driver and specify landscape receipt printing on another driver)

- 11** The “Start Copying Files” screen appears. See “Current Settings” to confirm the installation settings and then click the (Next) button.
- 12** The APD is installed.
- 13** The “InstallShield Wizard Complete” screen appears. Click the (Finish) button to finish installation.

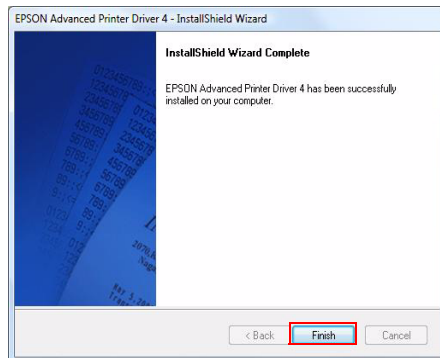
11 &gt;



12 &gt;



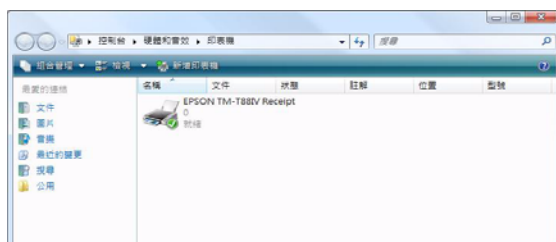
13 &gt;



2

**14** When printer drivers are added at Step 5, confirm that the printer drivers are installed in (硬體和音效) - (印表機) from (開始) - (控制台). ([Reference page of other OS.](#))

When you have not added printer drivers at Step 5, no printer drivers are displayed in the (印表機).



## Uninstallation

Uninstall everything related to APD (port drivers, printer drivers, and so on).

### NOTE

The APD has the silent uninstallation function that enables you to uninstall without displaying any screens. For more details, see "[/uninstall : Silent Uninstallation](#)" on page 75.

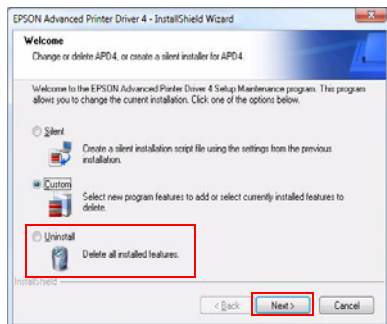
### CAUTION

Do not uninstall printer drivers directly from [ 開始 ] - [ 控制台 ] - [ 硬體和音效 ] - [ 印表機 ]. (Reference page of other OS.) Even if the icon (the printer driver) disappeared from the screen, APD is not uninstalled. To uninstall the printer driver, see "[Uninstalling the printer driver](#)" on page 56.

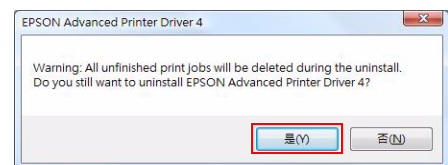
Follow the procedure below to uninstall the APD.

- 1 End all the other operations on the computer.
- 2 Select from (開始) - (所有程式) - (EPSON) - (EPSON Advanced Printer Driver 4) and open (Change or delete APD4, or create a silent installer for APD4.)
- 3 The "Welcome" screen appears. Select "Uninstall", then click the (Next) button.
- 4 The uninstallation confirmation screen appears. Click the (是) button.
- 5 The APD is uninstalled.

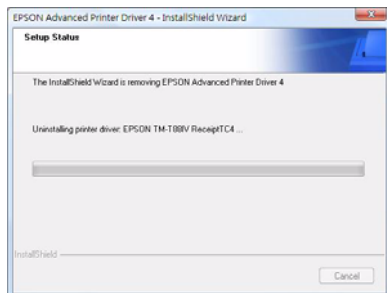
3 >



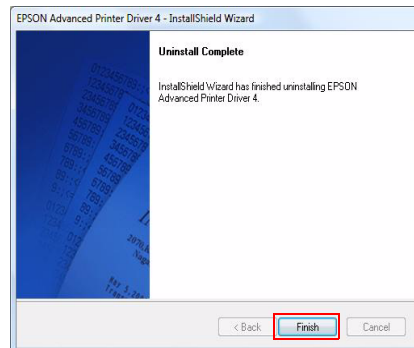
4 >



5 >



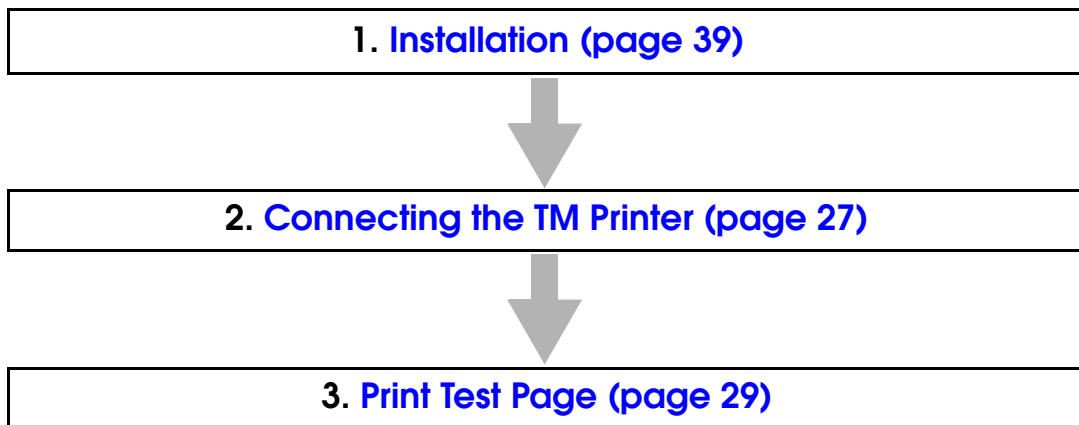
- 6 The “Uninstall Complete” screen appears. Click the (Finish) button to finish uninstallation.



## Custom Install

In the custom installation, you can select certain features to install. Additionally, you can select driver version from 32 or 64 bit depending on your OS environment for the APD 4.07 or later.

### Installation Flow



### Installation

Follow the procedure below.

- 1** Double click the (APD) icon of installer and start the installation.
- 2** The "InstallShield Wizard" screen appears. Check (Warning) for the environment of the computer. To continue installation, click the (Next) button. (See "[Compatibility between APD 4.5xx or later and other driver/utility](#)" on page 19.)
- 3** The "License Agreement" screen appears. Read through it and if you accept its terms, select "I accept the terms of the license agreement" and click the (Next) button.

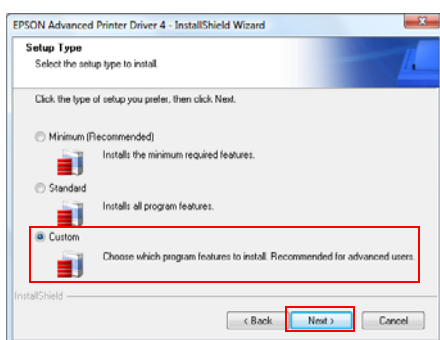
**4** The “Setup Type” screen appears. Then select "Custom" and click the (Next) button.

**5** The “Printer Configuration” screen appears. When installing the printer driver as well as the APD, click the (Add) button.

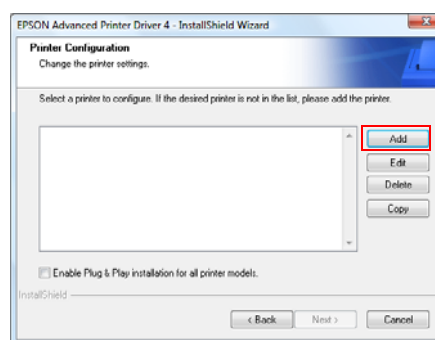
To install a driver through Plug and Play feature after installing the APD, check “Enable Plug & Play installation for all printer models.” and click the (Next) button to go to Step 11.

Setting		Description
Enable Plug & Play installation for all printer models.	Unchecked (default)	Only drivers for selected models are installed.
	Checked	Drivers for all models are installed. You can install other models’ drivers through Plug and Play feature after installing the APD.

**4 >**



**5 >**



**6** The “Add Printer” screen appears. Configure the printer driver and port to use, and click the (Next) button.

Setting	Description
Select driver	Select the printer driver to be installed.
Printer name	The printer driver name. This is changeable. Do not use Unicode/2-byte characters for the name.
Port Type	Select the type of interface to connect the computer and printer. Create a Parallel port: Proceed to Step 7. Create a Serial port: Proceed to Step 8. Create an Ethernet port: Proceed to Step 9. Create a USB port: Proceed to Step 10.
Set as Default Printer	Check when configuring the printer as that normally used from the Windows applications.



- 7** The “Parallel Port Settings” screen appears. Configure the settings of the Parallel port and click the (Next) button. Proceed to Step 10.

Setting	Description
Printer name	The printer name you entered at Step 6 is displayed. This cannot be changed.
LPT Port	Specify the number of parallel port used for connecting the printer. Usually, the port number is automatically displayed and no setting is required.

- 8** The “Serial Port Settings” screen appears. Configure the settings of the Serial port and click the (Next) button. Proceed to Step 10.

Setting	Description
Printer name	The printer name you entered at Step 6 is displayed. This cannot be changed.
COM Port	Specify the number of serial port used for connecting the printer.
Baud Rate	Specify the baud rate.
Data Bits	Specify the data bits.
Stop Bits	Specify the stop bits.
Flow Control	Specify the method of data flow between the computer and the printer.
Parity	Specify the parity.

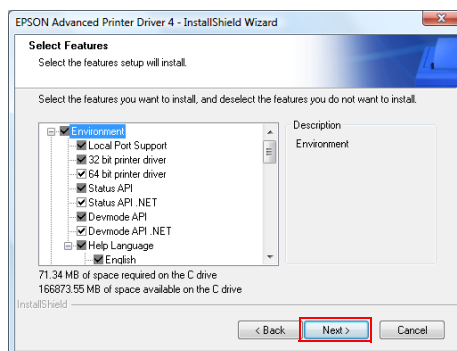
- 9** The “Ethernet Settings” screen appears. Configure the IP Address of the TM printer and click the (Next) button. Proceed to Step 10.

Setting	Description
Printer name	The printer name you entered at Step 6 is displayed. This cannot be changed.
IP address	Enter the printer IP address. For the procedure to configure an IP address for the TM printer, see <a href="#">"Configuring an IP address for the TM printer" on page 58.</a>

- 10** The display returns to the “Printer Configuration” screen. All the printer drivers, configured between Step 6 to Step 9, appear in the list. To install another printer driver, select one method from the followings. Click the (Next) button after the configuration.

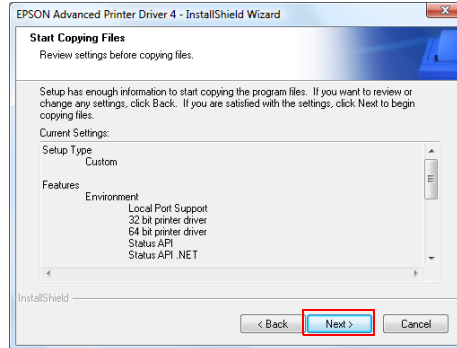
- Add Multiple Printer Drivers :  
Click the [Add] button. Repeat the Steps from 6 to 9.
- Install and Replicate a Driver :  
Click the [Copy] button. Repeat the Steps from 6 to 9.  
(You can connect up to 8 printers concurrently and copy up to 100 copies of a driver.)

- 11** The “Select Features” screen appears. Select the features of the APD you want to install, and then click the (Next) button. The following features are available.



Features		Description
Environment	32 bit printer driver	Supports EPSON printer driver for 32 bit version OS. Selectable when installing from 64 bit version OS.
	64 bit printer driver	Supports EPSON printer driver for 64 bit version OS. Selectable when installing from 32 bit version OS.
	Status API .NET	Supports Status API in .NET environment.
	Devmode API .NET	Supports Devmode API in .NET environment.
	Help Language	Shows the Help in selected language.
Tools	TMFlashLogo	Installs the TM Flash Logo Setup Utility and TM Flash Logo Setup Utility Ver.3 that allows you to save bitmapped images to the TM printer.
	Electric Journal	Installs the Electric Journal setup utility.
	Paper Layout	Installs the Paper Layout setup tool.
	Status Viewer	Installs the Status Viewer. (Only in TM-C100) “Automatic Startup” is available when “Status Viewer” is checked. The Status Viewer automatically starts up on login when the box is checked.
	Printer Network Setting	Installs the Printer Network Setting.
Add a shortcut to the Start menu.		Shortcut icon to the APD will be added in the Start menu. Default setting : checked

- 12** The “Start Copying Files” screen appears. See “Current Settings” to confirm the settings to be installed and then click the (Next) button.



- 13** The APD is installed.
- 14** The “InstallShield Wizard Complete” screen appears. When you click the (Finish) button, the installation ends.
- 15** In (硬體和音效) - (印表機) from (開始) - (控制台), check that the specified printer driver is correctly installed. ([Reference page of other OS.](#))

## Plug and Play

Using Windows Plug and Play function, a printer driver can be easily installed on a computer on which the APD is already installed.

**CAUTION**

- The Plug and Play function is available only for the TM printer with the USB interface.
- If “Enable Plug & Play installation for all printer models” is not checked during minimum or custom installation, only the drivers for the installed models can be installed.

### Installation Flow

1. [Connecting the TM Printer \(page 45\)](#)



2. [Installing the printer driver \(page 45\)](#)



3. [Print Test Page \(page 29\)](#)

## Connecting the TM Printer

Connect the TM printer following the procedure below.

- 1 Check that "Receive buffer full" is set as a busy condition of the printer.
- 2 Connect the TM printer.

### NOTE

- If you inadvertently connect the TM printer to the computer before installing the APD, delete the corresponding port driver and then, without connecting the TM printer, reinstall the printer driver.
- For information on how to connect the TM printer and check the DIP switch setting, see the User's Manual supplied with the TM printer or the Technical Reference Guide.

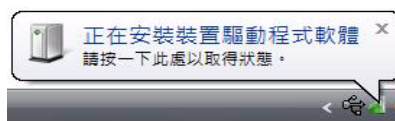
### CAUTION

- The maximum number of printers that can be simultaneously connected to multiple computers is 8.
- Turn off the power of the TM printer and wait for more than 5 seconds before turning on the power.
- USB device requirements
  - \* Maximum USB cable length is 5m, and 5 cascaded hubs maximum.
  - \* Use the USB cable and the USB hubs compliant with USB2.0 specification (12Mbps).

For details, see the C:\Program Files\EPSON\EPSON Advanced Printer Driver 4\TMUSB\readme\_e.txt generated after the APD installation.

## Installing the printer driver

The printer driver is automatically installed when the connected printer is turned on. The following message appears in the lower right of the computer screen.



### CAUTION

The printer driver cannot be added when the TM printer is offline (cover open, paper out, and so on.) When it recovers from the offline status, the printer driver will be added.

# Shared Printer

APD4 supports shared printer (Point&Print). This section describes how to install a shared printer into a client computer. The uninstallation procedure is also provided.

## NOTE

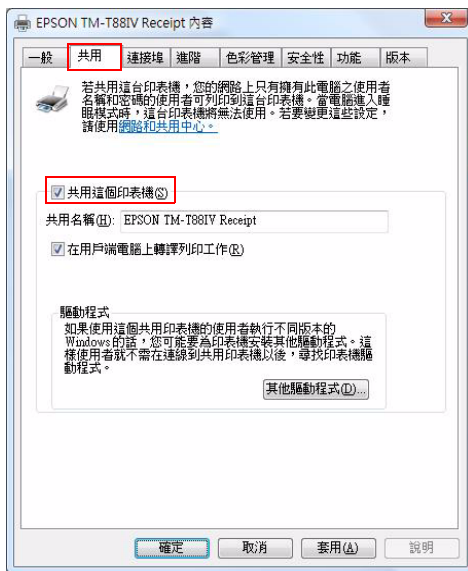
When you install both 32 bit and 64 bit printer drivers on a server, the shared printer environment can be provided for clients using 32 bit and 64 bit version OS. For example, if the 32 bit driver is prepared on a 64 bit server, the server can provide the driver for 32 bit clients.

## Installation

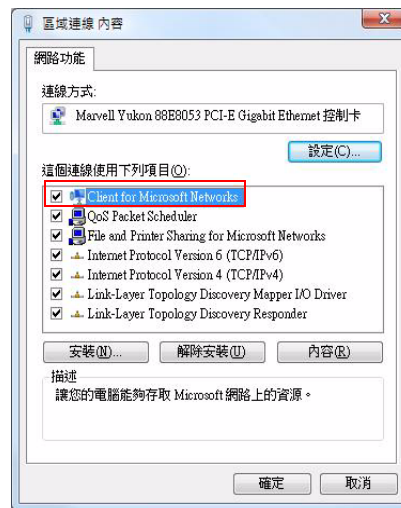
Before installing the printer to be shared, check the followings.

- Make sure the printer for the server is set for sharing.
- If Epson driver/utility is installed on a client computer, check the version.  
(See "[Compatibility between APD 4.5xx or later and other driver/utility](#)" on page 19)
- Make sure Client for Microsoft Networks is installed on a server and a client computer on which the APD will be installed.

<Printer setting for sharing>  
(Server)



<Checking Client for Microsoft Networks>  
(Server/Client)

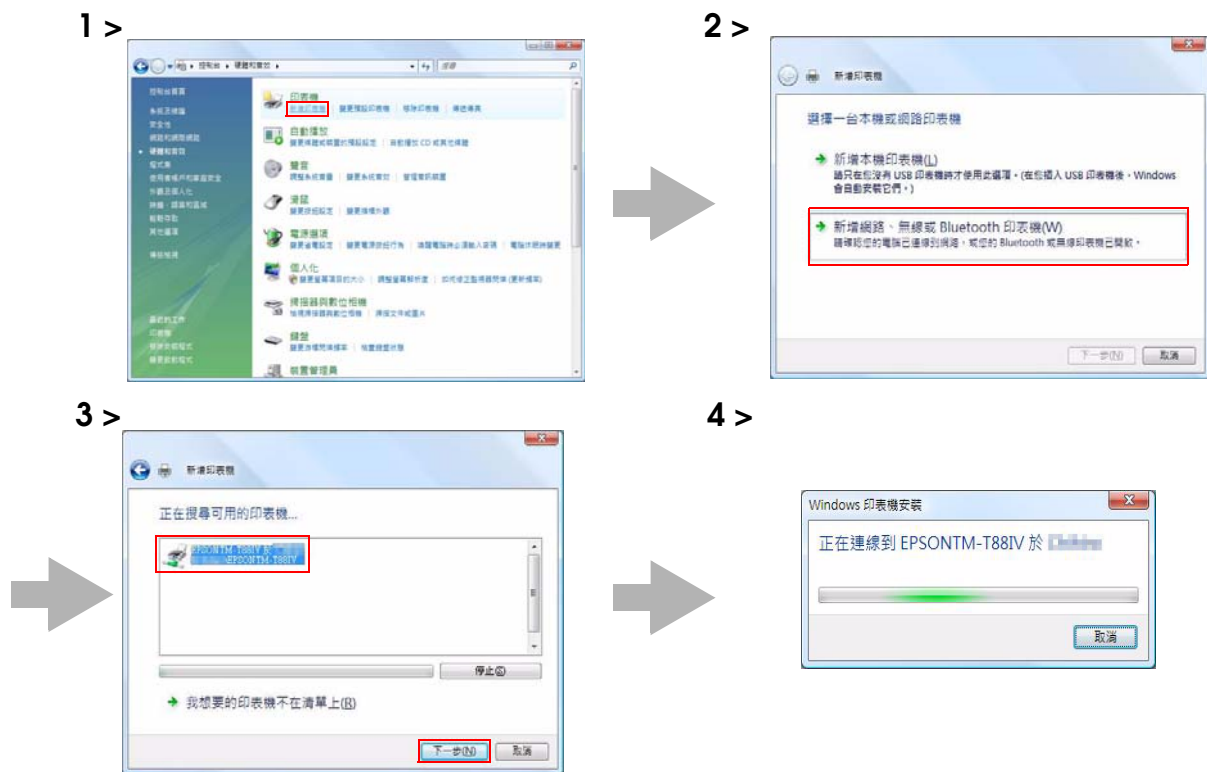


## NOTE

When more than one user uses one client computer, each user must install Client for Microsoft Networks.

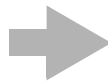
Follow the procedures below to install the shared printer on the client computer.

- 1 From ( 開始 ) - ( 控制台 ) - ( 硬體和音效 ), select ( 新增印表機 ).  
(Reference page of other OS.)
- 2 The "選擇一台本機或網路印表機" screen appears. Select ( 新增網路 無線或 Bluetooth 印表機 ).
- 3 The "正在搜尋可用的印表機" screen appears. Select a printer to be shared on the displayed list, and click the ( 下一步 ) button.
- 4 The selected shared printer is installed.



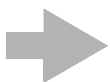
- 5 Click the ( 列印測試頁 ) button to check if the printer functions normally.
- 6 The following screen appears. If the test print was output correctly, click the ( 關閉 ) button. If the test print was not output correctly, click the ( 印表機問題疑難排解 ) button and perform troubleshooting in accordance with the Windows message.
- 7 Click the ( 完成 ) button to finish the installation.

5 >



7 >

6 >



- 8 In ( 開始 ) - ( 控制台 ) - ( 硬體和音效 ) - ( 印表機 ), check that the specified printer driver is correctly installed. (Reference page of other OS.)



## Uninstallation

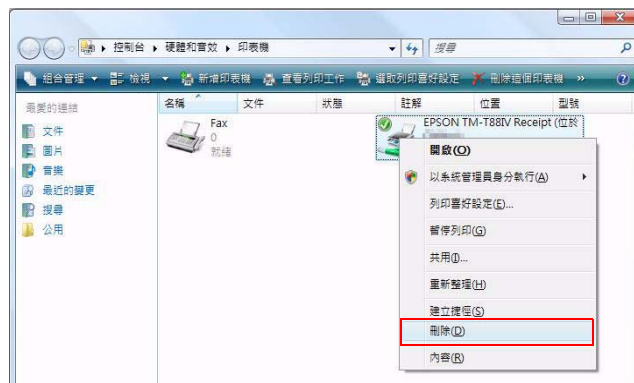
This section describes how to uninstall a shared printer from a client computer.

- Uninstall the shared printer [page 49](#)
- Uninstall the APD [page 50](#)

### Uninstalling the shared printer

Follow the procedures below to uninstall the shared printer.

- 1 From ( 開始 ) - ( 控制台 ) - ( 硬體和音效 ), select ( 印表機 ).  
(Reference page of other OS.)
- 2 Right click on the printer driver to be deleted and select ( 刪除 ).



## Uninstalling the APD

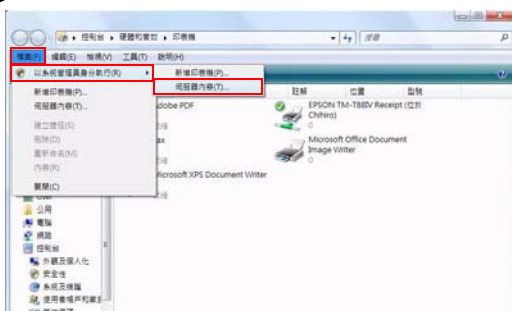
Follow the procedures below to uninstall the APD.

### CAUTION

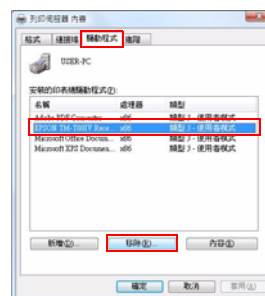
Uninstallation of the APD must be executed by an administrator.  
A normal user needs an administrator's password to execute the uninstallation.

- 1 Uninstall all the shared printers. See "[Uninstalling the shared printer](#)" on [page 49](#).
- 2 From (開始) - (控制台) - (硬體和音效), select (印表機).  
(Reference page of other OS.)
- 3 From (檔案) - (以系統管理員身分執行), select (伺服器內容).  
(Reference page of other OS.)
- 4 The " 列印伺服器 內容 " screen appears.  
Select a printer driver to delete in the(驅動程式) tab, and click the (移除) button.

3 >



4 >

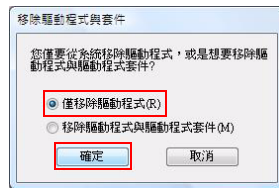


- 5 The “ 移除驅動程式與套件 ” screen appears. Select “ 僅移除驅動程式 ” and click the ( 確定 ) button.

For Windows XP, the screen in Step 5 does not appear. Go to Step 6.

- 6 The “Print Server Properties” screen appears. Click the ( 是 ) button to delete the printer driver selected in Step 4.

5 &gt;



6 &gt;

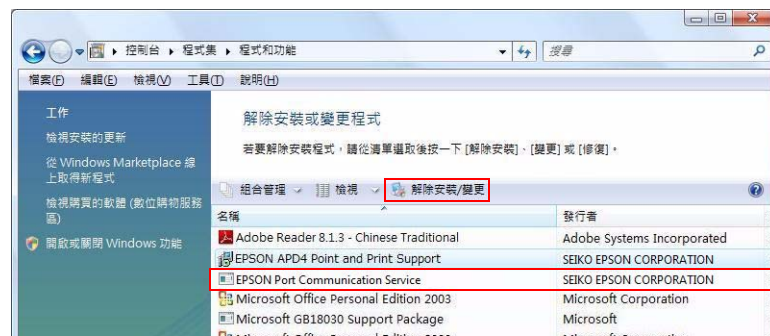


- 7 From ( 開始 ) - ( 控制台 ), select ( 移除安裝程式 ).  
(Reference page of other OS.)

- 8 Select "EPSON APD4 Point and Print Support", and click the (Uninstall) button to delete (EPSON APD4 Point and Print Support).



- 9 Select “EPSON Port Communication Service,” and click the (Uninstall) button to delete “EPSON Port Communication Service,” and uninstallation of the APD is completed.



## Maintenance after Installing the APD

Maintenance procedures after the APD is installed.

- Adding the printer driver
- Uninstalling the printer driver
- Replacing a printer
- Configuring an IP address for the TM printer
- Changing the port settings of the printer driver
- Upgrade installing the APD

### Adding the printer driver

You can add the printer driver you want to use among drivers for all models by following the steps below.

#### CAUTION

You cannot add the printer drivers directly from [開始] - [控制台] - [硬體和音效] - [印表機].  
([Reference page of other OS.](#))

- 1** If "Enable Plug & Play installation for all printer models" is not checked during minimum or custom installation, double-click the icon of installer for the APD.  
If the APD is installed through standard installation, go to (開始) - (所有程式) - (EPSON) - (EPSON Advanced Printer Driver 4) - (Change or delete APD4, or create a silent installer for APD4.)
- 2** The "Welcome" screen appears. Then select "Custom" and click the (Next) button.
- 3** The "Printer Configuration" screen appears. Click the (Add) button to select the model to install.

- 4** The Add Printer screen appears. Configure the printer driver and port to use, and click the (Next) button.

Setting	Description
Select driver	Select the printer driver to be installed.
Printer name	The printer driver name. This is changeable. Do not use Unicode/2-byte characters for the name.
Communication	Select the type of interface to connect the computer and printer. Create a Parallel port: Proceed to Step 5. Create a Serial port: Proceed to Step 6. Create an Ethernet port: Proceed to Step 7. Create a USB port: Proceed to Step 8.
Set as Default Printer	Check when configuring the printer as that normally used from the Windows applications.

- 5** The “Parallel Port Settings” screen appears. Configure the settings of the Parallel port and click the (Next) button. Proceed to Step 8.

Setting	Description
Printer name	The printer name you entered at Step 4 is displayed. This cannot be changed.
LPT Port	Specify the number of parallel port used for connecting the printer. Usually, the port number is automatically displayed and no setting is required.

- 6** The “Serial Port Settings” screen appears. Configure the settings of the Serial port and click the (Next) button. Proceed to Step 8.

Setting	Description
Printer name	The printer name you entered at Step 4 is displayed. This cannot be changed.
COM Port	Specify the number of serial port used for connecting the printer.
Baud Rate	Specify the baud rate.
Data Bits	Specify the data bits.
Stop Bits	Specify the stop bits.
Flow Control	Specify the method of data flow between the computer and the printer.
Parity	Specify the parity.

**7** The “Ethernet Settings” screen appears. Configure the IP Address of the TM printer and click the (Next) button. Proceed to Step 8.

Setting	Description
Printer name	The printer name you entered at Step 4 is displayed. This cannot be changed.
IP address	Enter the printer IP address. For the procedure to configure an IP address for the TM printer, see <a href="#">"Configuring an IP address for the TM printer" on page 58.</a>

**8** The display returns to the “Printer Configuration” screen. All the printer drivers, configured between Step 5 to Step 7, appear in the list. To install another printer driver, select one method from the followings. Click the (Next) button after the configuration.

- Add Multiple Printer Drivers :  
Click the [Add] button. Repeat the Steps from 5 to7.
- Install and Replicate a Driver :  
Click the [Copy] button. Repeat the Steps from 5 to7.  
(You can connect up to 8 printers concurrently and copy up to 100 copies of a driver.)

- 9** The “Select Features” screen appears. Select the feature of the APD to install to the computer and click (Next) button. You can select following features.

Features		Description
Environment	32 bit printer driver	Supports EPSON printer driver for 32 bit version OS. Selectable when installing from 64 bit version OS.
	64 bit printer driver	Supports EPSON printer driver for 64 bit version OS. Selectable when installing from 32 bit version OS.
	Status API .NET	Supports Status API in .NET environment.
	Devmode API .NET	Supports Devmode API in .NET environment.
	Help Language	Shows the Help in selected language.
Tools	TMFLogo	Installs the TM Flash Logo Setup Utility and TM Flash Logo Setup Utility Ver.3 that allows you to save bitmapped images to the TM printer.
	Electric Journal	Installs the Electric Journal setup utility.
	Paper Layout	Installs the Paper Layout setup tool.
	Status Viewer	Installs the Status Viewer. (Only in TM-C100) “Automatic Start-up” is available when “Status Viewer” is checked. The Status Viewer automatically starts up on login when the box is checked.
	Printer Network Setting	Installs the Printer Network Setting.
Add a shortcut to the Start menu.		Shortcut icon to the APD will be added in the Start menu. Default setting : checked

- 10** The “Start Copying Files” screen appears. Confirm the printer driver to be installed which is displayed in "Current Settings" and then click the (Next) button.
- 11** The printer driver added in the list at Step 8 is installed.
- 12** The “Maintenance Complete” screen appears. When you click the (Finish) button, the process of installing the printer driver ends.

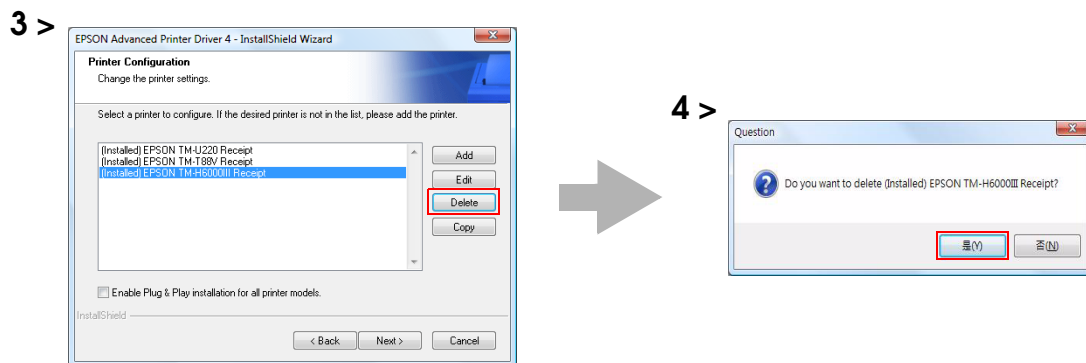
## Uninstalling the printer driver

To uninstall printer driver(s) out of use when multiple drivers are installed, follow the steps below.

### CAUTION

To uninstall all printer drivers, refer to "Uninstallation" on page 17.

- 1 Select from (開始) - (所有程式) - (EPSON) - (EPSON Advanced Printer Driver 4) and open (Change or delete APD4, or create a silent installer for APD4.)
- 2 The "Welcome" screen appears. Then select "Custom" and click the (Next) button.
- 3 The "Printer Configuration" screen appears. Select the printer driver from the list which you want to remove, and click the (Delete) button.
- 4 A screen appears to confirm the remove action. Click the (是) button.



- 5 The display returns to the "Printer Configuration" screen. Click the (Next) button.
- 6 The "Select Features" screen appears. Features installed on your computer are automatically checked. Uncheck the feature to uninstall. Click the (Next) button.



- 7 The “Start Copying Files” screen appears. Confirm the printer driver to be removed which is displayed in "Current Settings" and then click the (Next) button.
- 8 The printer driver removed in Step 3 to Step 5 will be removed.
- 9 The “Maintenance Complete” screen appears. When you click the (Finish) button, the process of uninstalling the printer driver ends.

## Replacing a printer

When you replace the TM printers equipped with the same interface, beware of the following.

- Set the new TM printer’s DIPSW as same as the previous TM printer’s settings regardless of interface.
- When a logo is set for the TM printer, set up the logo again.
- If the memory switch is changed, see the User's Manual or the Technical Reference Guide of each TM printer.

Replacement configurations for each interface are as follows:

Interface	Description
Parallel	No configuration is required after replacement.
Serial	Set the Serial connection setting using the DIPSW or the memory switch.
USB	No configuration is required after replacement.
Ethernet	Set the same IP address as the previous TM printer.

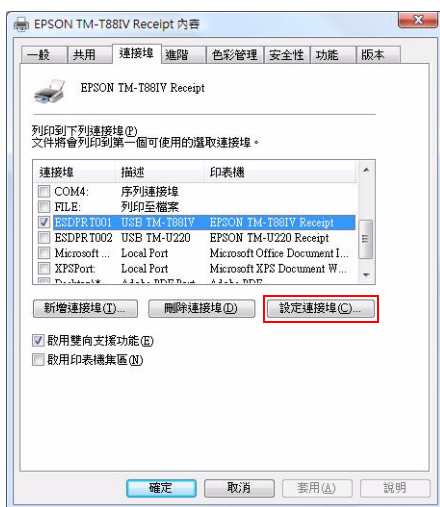
## Configuring an IP address for the TM printer

To configure an IP address for the TM printer, set the IP address of the port of the printer driver first, and then set the address to the TM printer.

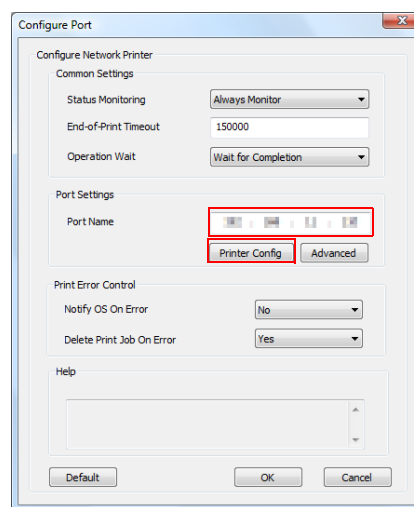
Follow the steps below.

- 1 Select from (開始) - (控制台) - (硬體和音效) and open (印表機) and then right click the target printer driver and select (內容) ([Reference page of other OS.](#)).
- 2 The property screen of the TM printer appears. Select the (連接埠) tab and then click the (設定連接埠) button.
- 3 The "Configure Port" screen appears. Specify the IP address to be set for the TM printer, and click the (Printer's set) button.
- 4 The "Start Printer Network Setting" screen appears. Click the (Next) button.

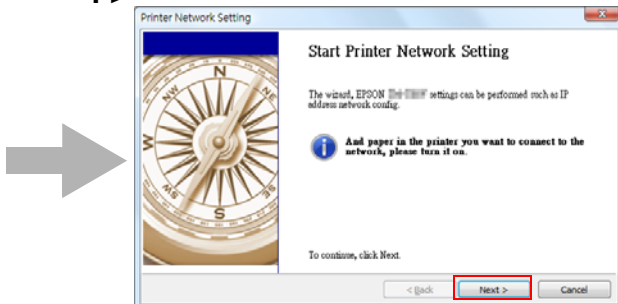
2 >



3 >



4 >



- 5** The screen as show below appears. Select the target printer, and click the (Setting) button.

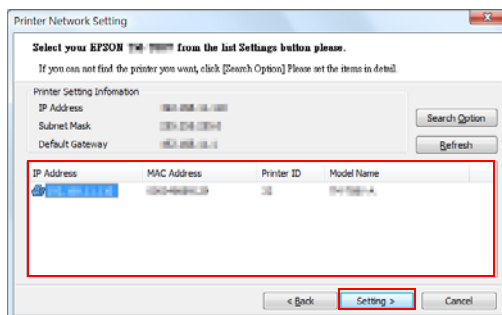
**NOTE**

- Clicking the [Search Option] button and using the search option setup function enables you to search TM printers from a specific network.
- To change the settings of TM-P60 connected with a serial cable, follow the steps below.
  1. Click the [Search Option] button.
  2. Select [COM] and click the [Detail] button.
  3. Set the serial connection and click the [OK] button.
  4. Click the [Refresh] button and select "TM-P60".
- If the target TM printer is not displayed, click the [Refresh] button.  
If using the [Refresh] button does not work, check whether the target TM printer is connected to the network.

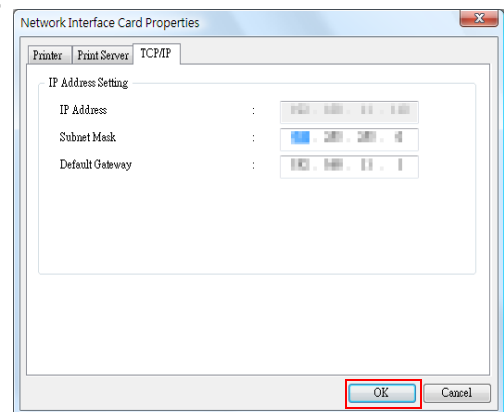
- 6** The “Network Interface Card Properties” screen appears. Check the network settings to be set for the target TM printer, and click the (OK) button.

- 7** The confirmation screen appears. Click the (是) button.

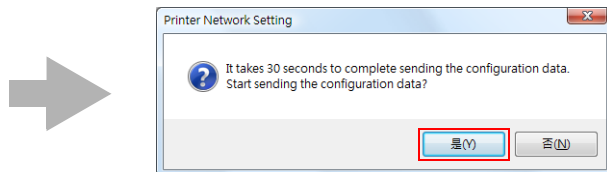
5&gt;



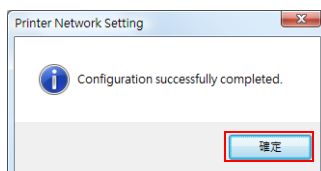
6&gt;



7&gt;



- 8 The screen to enter the network I/F password appears. Enter an optional password and click the (OK) button. Configuration of the IP address for the TM printer starts.
- 9 When the following screen appears, changing the IP address of the TM printer has finished. Click the (OK) button to complete the configuration.



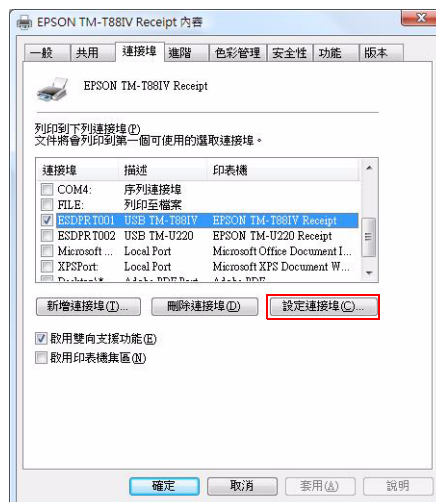
## Changing the port settings of the printer driver

Change the port settings of the printer driver in the following cases:

- Serial interface:  
Serial port, serial connection conditions, Busy Condition (when coexisting with other driver), power-off determination time-out time
- Ethernet interface:  
IP address, other communication conditions

Change the settings in the following procedure:

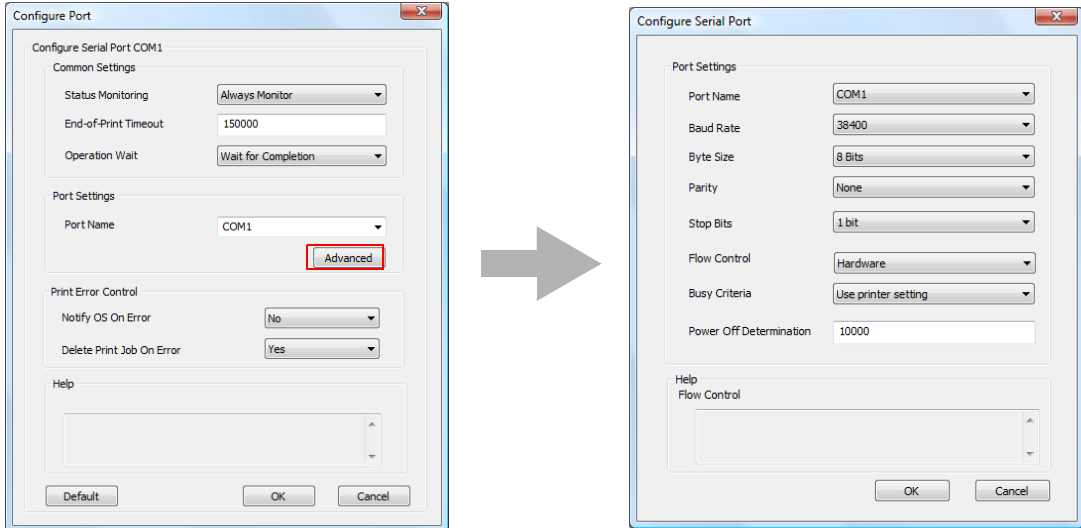
- 1 Select from (開始) - (控制台) - (硬體和音效) and open (印表機) and then right click the target printer driver and select (內容) ([Reference page of other OS.](#)).
- 2 The property screen of the TM printer appears. Select the (連接埠) tab and then click the (設定連接埠) button.



**3** The "Configure Port" screen appears. Change the port settings.

- For serial:

The common settings and print error control can be configured. Clicking the (Advanced) button displays the "Configure Serial Port" screen.

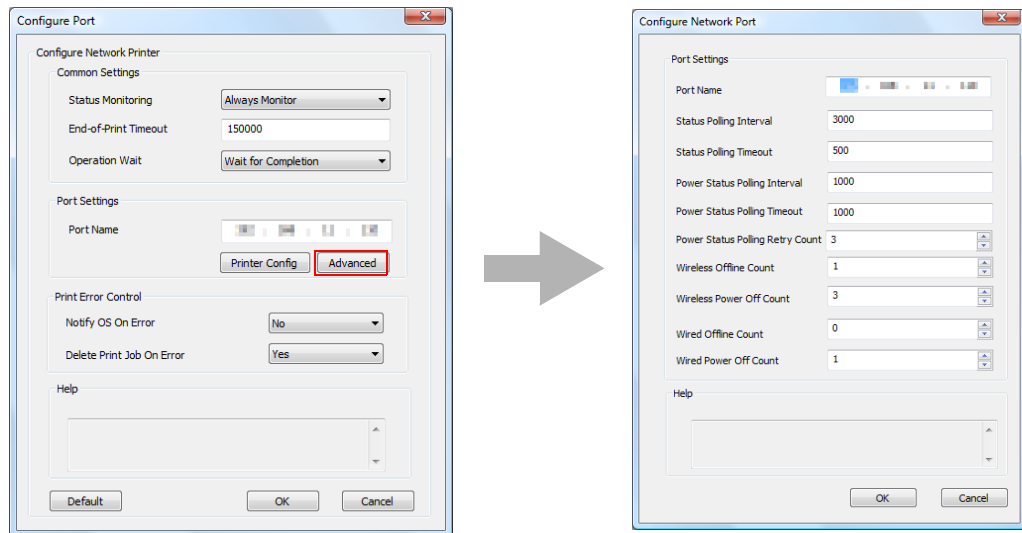


Major settings:

Setting	Description
Port Name	Change the COM port used for connecting the TM printer.
Connection condition	Set Baud Rate, Byte Size, Parity, Stop Bits and Flow Control.
Busy Criteria (Default : Use Pprinter setting)	If printing is performed with the driver switched when coexisting with OPOS, restarting the TM printer may be demanded. In this case, select "Use printer setting".
Power Off Determination (Default : 10000(10Second))	To make the application to determine earlier, change the setting.

- For Ethernet:

The common settings and print error control can be configured. IP address can also be changed. Clicking the (Advanced) button displays the Configure Network Port screen to configure the detailed network settings. Configure the settings by referring to help.

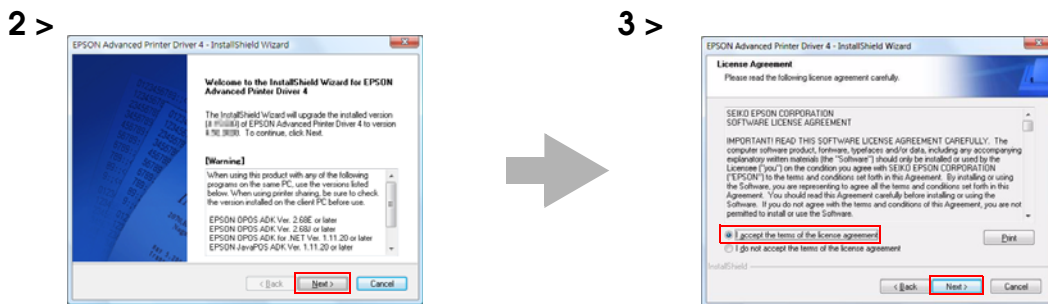


- 4** The display returns to the 内容 screen. When you click the (確定) button, the changes you made becomes effective.

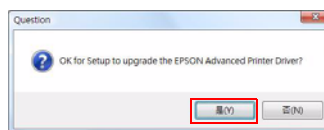
## Upgrade Install of the APD

Follow the procedures below to perform upgrade installation of the APD of the new version.

- 1 Double click the (APD) icon of installer and start the installation.
- 2 The "InstallShield Wizard" screen appears. Check (Warning) for the environment of the computer. To continue installation, click the (Next) button. (See ["Compatibility between APD 4.5xx or later and other driver/utility" on page 19.](#))
- 3 The "License Agreement" screen appears. Confirm its content, select "I accept the terms of the license agreement." and click the (Next) button.

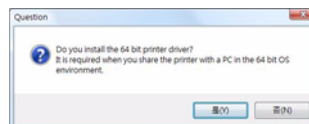


- 4 The screen asking whether you want to upgrade the APD to the new version appears. Click the ( 是 ) button.



### NOTE

In the case of upgrade install of the APD4.06a or earlier, the screen asking whether you want to install the 64 bit printer driver appears. Clicking the [ 是 ] button provides the shared printer environment to clients using 64 bit version OS.





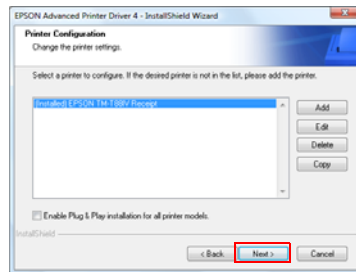
- 5** The “Printer Configuration” screen appears. Click the (Next) button.

**NOTE**

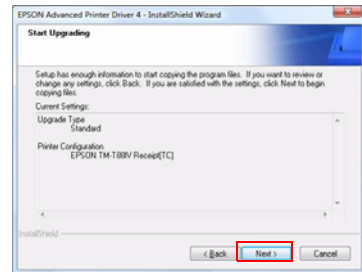
Click [Add] button to add a printer driver.

- 6** The “Start Upgrading” screen appears. Confirm the content of installation in the “Current Settings” field, and click the (Next) button.
- 7** The upgrade installation of the APD starts.
- 8** The “Upgrade Complete” screen appears. Click the (Finish) button to complete the upgrade installation.

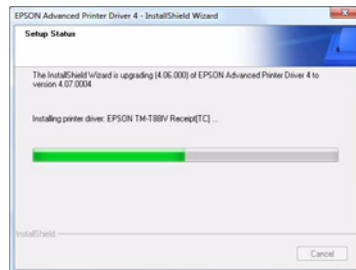
5 >



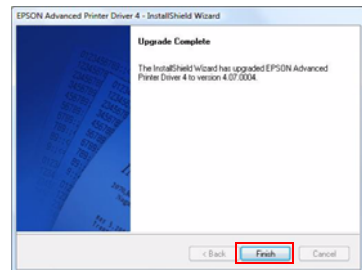
6 >



7 >



8 >



2



# Silent Installation

This chapter describes the procedures for the Silent Installation.

## What Is a Silent Installation?

The silent installation is a method that copies the existing APD setup environment to other computers without user operation. There are the following two methods.

### ❑ Using a silent installation package (\*.exe)

Create the silent installation package on the copy source computer.

- Executing this file on another computer enables you to install the minimum environment for operating the APD from all the environment of the copy source computer.
- When the silent installation is executed with this file, you cannot create the silent installation package or the script file for the silent installation, or add another printer.

### ❑ Using a script file (\*.inf) for the silent installation

Create the script file for the silent installation on the copy source computer.

- Executing this file and the APD file (APD\_4xxTC.exe) on another computer enables you to install the complete APD environment of the copy source computer.
- In the environment in which the silent installation is executed with this file, you can create the silent installation package or the script file for the silent installation, and you can also add another printer.

With this function, you can incorporate the APD installation into a batch file, a recovery disc for the OS, and an installer of an application.

Also, you can add the command options for the silent installation to enable the following functions.

- Notification when completing the installation
- Restart setting after completing the installation
- Upgrade installation settings

Installing without displaying screens.

### CAUTION

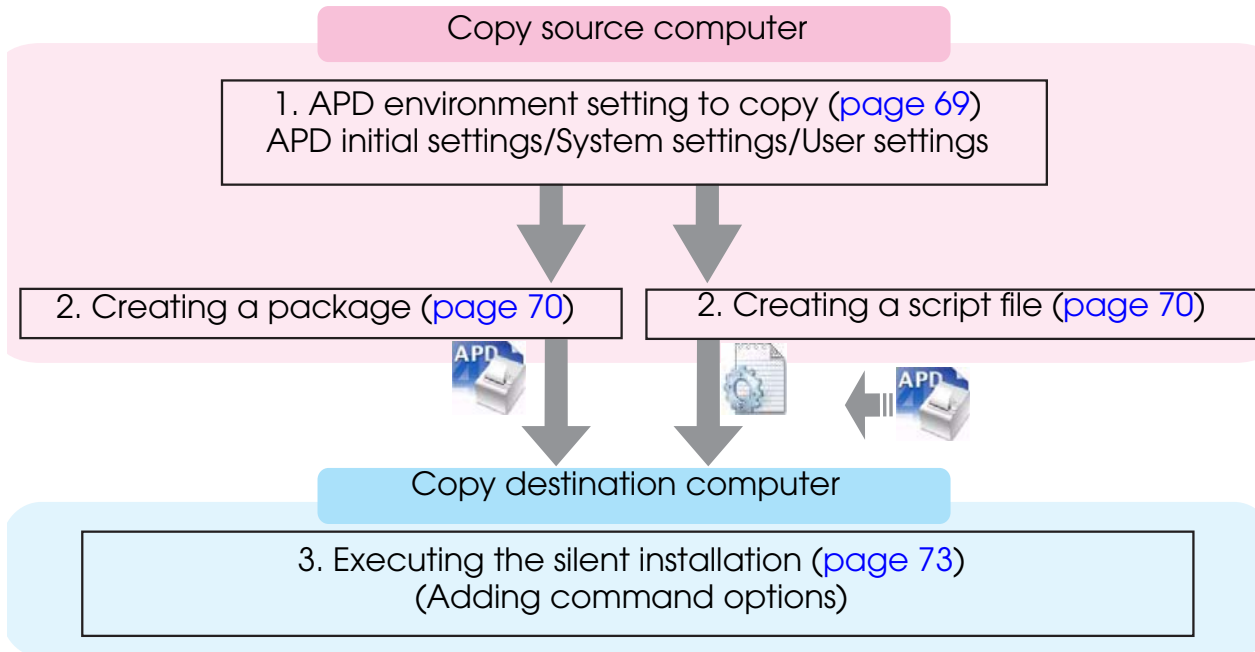
- To use the silent installation, Internet Explorer version 4.0 or later is required.
- When APD3 or APD4 have been already installed in the target computers, uninstall those before the silent installation.

This method is useful especially in the following cases:

- You can make the same setting to multiple computers easily.
- Even computers with no displays can be set up.
- In case of printing trouble, the APD environment of the computer with an error can be recreated on another computer by using the script file for the silent installation of that computer, and it improves the service and maintenance function. (In the environment in which the silent installation is executed with the silent installation package, the script file for the silent installation cannot be created.)

## Flow of the Silent Installation

The flow of the silent installation is described below.



## Setting the APD Environment To Be Copied

Create the APD environment for the silent installation on the copy source computer.

Following APD environment to be copied can be selected.

- APD initial setting  
This is the setting when installing the APD.
- System setting  
This is the system setting for the printer.
- User setting  
This is the user setting for the printer. The same setting as that of the copy source computer.

### APD Setting

When copying the user setting or system setting of the printer, see the “TM/BA/EU Printer Manual” to make settings.

#### Making the system setting

Select (開始) - (控制台) - (硬體和音效) - (印表機), right-click the printer, and select (內容) - (進階) - (列印預設值) to make settings. ([Reference page of other OS.](#))

#### Making the user setting

Select (開始) - (控制台) - (硬體和音效) - (印表機), right-click the printer, and select (內容) - (一般) - (列印預設值) to make settings. ([Reference page of other OS.](#))

# Creating a Package or Script file

Create the silent installation package or the script file for the silent installation.

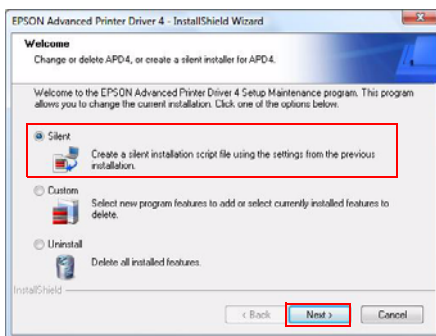
First, confirm which APD environment to copy on the copy source computer. (See "[Setting the APD Environment To Be Copied](#)" on page 69.)

Follow the steps below.

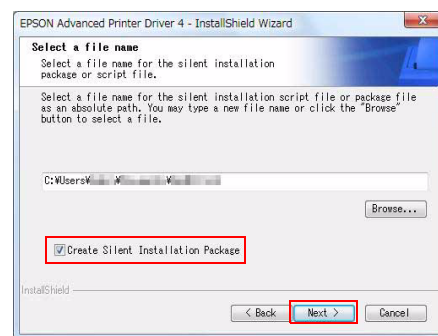
- 1** Select from (開始) - (所有程式) - (EPSON) - (EPSON Advanced Printer Driver 4) and open (Change or delete APD4, or create a silent installer for APD4.)
- 2** The "Welcome" screen appears. Select "Silent", then click the (Next) button.
- 3** The "Select a file name" screen appears. Specify a destination folder and file name, and specify which type of file to create. Click the (Next) button.

Setting	Description
Location to save the file and file name	Specify a destination and a file name for the file to be created.
Create silent installation package	<ul style="list-style-type: none"><li>• Check when you want to create a silent installation package.</li><li>• Uncheck when you want to create a script file for the silent installation.</li></ul> (Checked by default.)

2 >



3 >

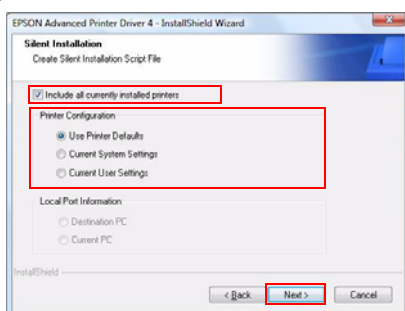


- 4** The “Silent Installation” screen appears. Select the setting you want to copy from (Printer Configuration), and select the printer to be installed. If you do not want to select all the printers installed in the copy source computer with the APD, uncheck (Include all currently installed printers). Click the (Next) button.
- The setting in (Printer Configuration) is the default value for the copy destination printer. When installing multiple printers, you cannot change each printer individually.
  - Go to Step 7 when you check (Include all currently installed printers).

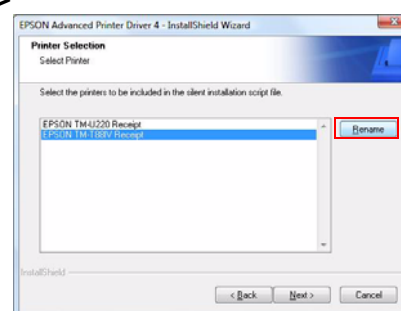
Setting	Description
Include all currently installed printers	If checked, all the APD printers installed in the copy source computer are selected. If unchecked, each APD printer installed in the copy source computer can be selected. (Checked by default.)
Printer Configuration	Select the printer setting that you want to copy.
Use Printer Defaults	Setting when the APD is installed is used.
Current System Settings	System settings of the printer You can check them by selecting (内容) - (進階) - (列印預設值).
Current User Settings	User Settings of the printer You can check them by selecting (内容).
Local Port Information	Not available.

- 5** “Printer Selection” screen appears. Select the printer driver you want to copy. To change the printer name, click the (Rename) button. If you do not want to change the printer name, go to step 7 by clicking the (Next) button.

4 &gt;

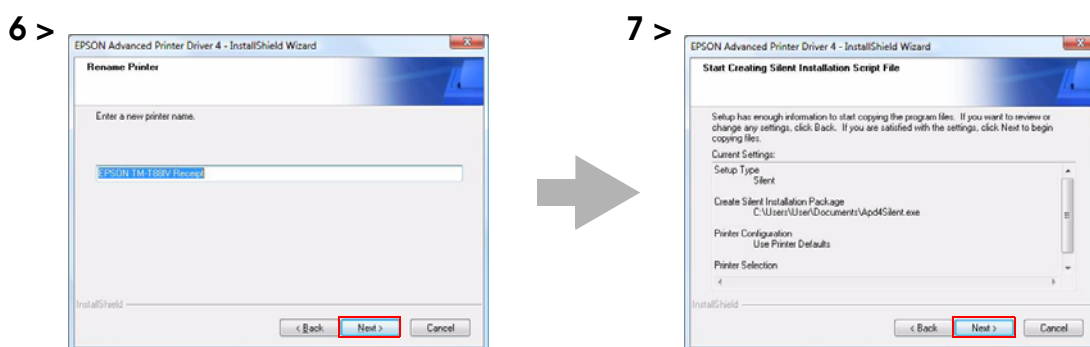


5 &gt;



**6** The "Rename Printer" screen appears. Change the printer driver name, and click the (Next) button.

**7** The "Start Creating Silent Installation Script File" screen appears. Make sure that the file information displayed in "Current Settings" is correct and click the (Next) button to create the silent installation package or the script file for the silent installation.



**8** The "Maintenance Complete" screen appears. Click the (Finish) button. The silent installation package or the script file for the silent installation has been created in the destination folder specified in Step 3.



## Executing the Silent Installation

You can execute the silent installation using the following methods.

- Execute the silent installation package on the copy destination computer.
- Copy the script file for the silent installation and the APD file, and execute a command from the command prompt.
- Develop a batch file or an application for the APD installation, and execute it.

### How to execute the Silent Installation

Following the procedures below to execute the silent installation.

---

#### Installing using the silent installation package

Copy the silent installation package to the copy destination computer, and execute the following command.

```
>[Package File Name(specified with the full path)]
```

**Ex:** D:\APD>Apd4Silent.exe

When checking the result of silent installation using a package file, check that the specified printer driver is correctly installed in [開始] - [控制台] - [硬體和音效] - [印表機].

---

#### Installing using the script file for the silent installation

Copy the script file for the silent installation and the APD file, and execute the following command.

```
>[APD_4xxTC.exe (specified with the full path)]  
    [/s /f1 "Apd4Silent.inf (specified with the full path)"]
```

**Ex:** D:\APD>APD\_400TC.exe /s /f1"D:\APD\Apd4Silent.inf"

## Checking the Installation Result

The silent installation results of the silent installation package/script file for the silent installation can be checked in the "Result Code" of "APD4SilentSetup.log" which is created in the same location as that of the package or the file.

The contents of "Result Code" are as follows.

Result Code	Description
0	Completed successfully
-3	The APD has already been installed.
2	The files needed for silent installation could not be found.
1151	The OS does not support the APD.
1223	The silent installation was cancelled by the user.

## Command Options

The command options of the silent installation and how to make settings are described below.

**NOTE**

You can use the command options in combination.

---

### /s /f1 : Silent installation using the script file

Using this command option enables you to execute the silent installation using the script file for the silent installation.

For more details, see ["Installing using the script file for the silent installation" on page 73](#).

---

### /s /a : Upgrade

Using this command option enables you to upgrade the APD. Printers not supported by the APD4 are deleted.

#### Example

```
D:\APD4\APD_406TC.exe /s /a
```

---

## /uninstall : Silent Uninstallation

Using this command option enables you to uninstall using the command line.

### Example

```
D:\APD4\APD_400TC.exe /s /uninstall
```

**NOTE**

When "/s" is not attached, the uninstallation screen is displayed.

---

## /d : Display the silent installation result in a dialog

Using this command option enables you to display the silent installation result in a dialog when the installation is completed.

### Example

**Package File**

```
D:\APD4\Apd4Silent.exe /d
```

**Script File**

```
D:\APD4\APD_400TC.exe /s /f1"D:\APD4\Apd4Silent.inf" /d
```

---

## /w /m :

Display a window message of the silent installation completion

Adding the Windows handle and message ID to the command enables you to display a window message of the silent installation completion.

### Example

In the example below, Windows handle is 0x6789abc, and message ID is 0x0501

**Package File**

```
D:\APD4\Apd4Silent.exe /w6789abc /m0501
```

**Script File**

```
D:\APD4\APD_400TC.exe /s /f1"D:\APD4\Apd4Silent.inf" /w6789abc /m0501
```

---

## /r : Restart setting after the installation

Using this command option enables you to make the restart setting of OS after the silent installation is completed.

Example when you want to restart

### Package File

```
D:\APD4\Apd4Silent.exe /rY
```

### Script File

```
D:\APD4\APD_400TC.exe /s /f1"D:\APD4\Apd4Silent.inf" /rY
```

Example when you do not want to restart

### Package File

```
D:\APD4\Apd4Silent.exe /rN
```

### Script File

```
D:\APD4\APD_400TC.exe /s /f1"D:\APD4\Apd4Silent.inf" /rN
```

---

## /l : Specify the install log file

Using this command option enables you to specify the output destination of the installation log (Apd4Setup.log). Normally this is output in the Windows folder.

Example

### Package File

```
D:\APD4\Apd4Silent.exe /l"D:\APD4\log.txt"
```

### Script File

```
D:\APD4\APD_400TC.exe /s /f1"D:\APD4\Apd4Silent.inf"  
/l"D:\APD4\log.txt"
```

---

## /P : Specify the destination IP address

Using this command option enables you to specify the IP address of the connection destination of the printer driver. This command is available during Ethernet connection.

Example

### Package File

```
D:\APD4\Apd4Silent.exe /P192.168.192.168
```

### Script File

```
D:\APD4\APD_400E.exe /s /f1"D:\APD4\Apd4Silent.inf" /P192.168.192.168
```